



CallCopy[®]

Innovations in Call Recording
and Contact Center Solutions

cc: Fusion Administration Guide, v5.0 R1

August 2012

Reference Guide

www.callcopy.com

Security Classification: CallCopy Confidential

Distribution: Approved internal CallCopy staff only and licensed CallCopy customers

Note: Applicable non-disclosure agreements must be in force for authorization.

Revision History			
Revision	Change Description	Author	Effective Date
0	Initial release.	JThomas	2012-06-21
1	Added Security and PCI section.	MBuckingham	2012-08-28

© Copyright 2011-2012, CallCopy, Inc. All rights reserved.

No part of this document may be transmitted or distributed, or copied, photocopied, scanned, reproduced, translated, microfilmed, or otherwise duplicated on any medium without written consent of CallCopy. If written consent is given, the same confidential, proprietary, and copyright notices must be affixed to any permitted copies as were affixed to the original. The information contained in this document does not constitute legal advice, and should not be considered a replacement for sound legal counsel. CallCopy shall be in no way liable for any use or misuse of the information presented herein.

Table of Contents

Introduction	4
Product Technical Overview	5
Requirements	6
Compatible Desktop Applications.....	6
Deployment and Redundancy Guidelines.....	6
Security	7
Install and Configure the Application	8
Permissions Needed for Installation	8
Fusion Log File.....	8
Uninstall the Application.....	9
Run the Installation Package.....	10
Configure the INI File.....	12
Install Java Support	13
Find the JRE Path.....	13
Install Support for the JRE	13
Test Java Support.....	13
Security and PCI Compliance	14
Troubleshooting	15
Screen/Application Flickers When Fusion Pulls Data.....	15
COM Class Error	15
Plan A: Run the COM Component Registration Fix Utility	15
Plan B: Register the COM Components Manually	16
About CallCopy	17

Introduction

This document is for cc: Fusion administrators. It explains

- System components
- System requirements
- How to install and configure the application

For information on creating scripts for cc: Fusion, contact your CallCopy representative and see the *cc: Fusion Scripts Guide*.

Product Technical Overview

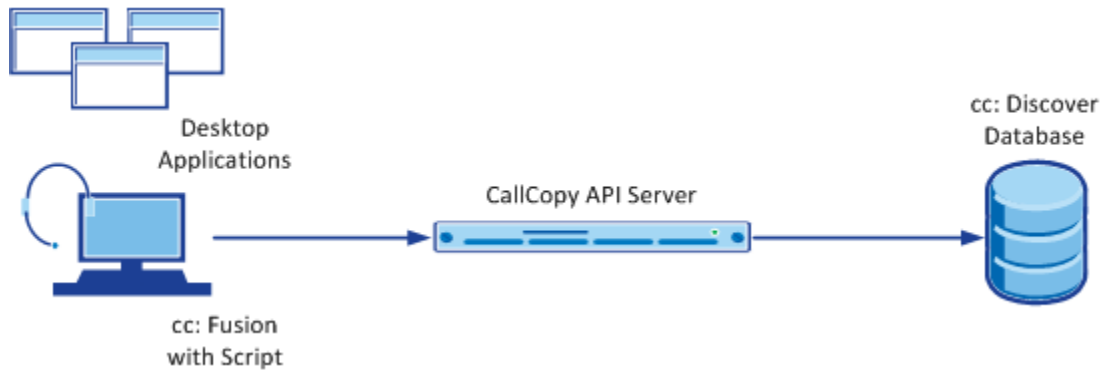
cc: Fusion is a desktop application that detects information in other applications and then performs actions based on that information. The actions performed are controlled by a script. Possible actions include

- Adding the information as metadata to a call recording in progress.
- Starting or stopping call recording.
- Triggering recording blackouts for compliance.

These diagrams illustrate the product’s components, their interactions, and deployment scenarios.

Note The client/server deployment scenario is a future product.

The cc: Fusion application can be installed on the PC with the script. In this scenario, all script installation and updates must be made manually on each PC.



Component	Function
cc: Fusion	Desktop application controlled by a script. Detects information in other desktop applications and performs actions specified in a script. The script is installed and managed locally. On startup, it is read and compiled automatically.
cc: Discover Server	Includes the cc: Voice recorder that records the audio and creates the raw call audio files. Creates call record files in the database.
Desktop Applications	See the <i>Requirements</i> section for information on the applications from which data can be captured.
CallCopy API Server	Used to write information from cc: Fusion application to the database.
cc: Discover Database	Stores call records associated with call audio WAV files. Data collected by the cc: Fusion client can be written to the call records.

Requirements

These requirements are only for cc: Fusion. For additional information, see the *cc: Discover Requirements* document. Final hardware specifications are determined by the CallCopy Sales Engineering team during the sales process.

Compatible Desktop Applications

CallCopy requires prospective customers to test if cc: Fusion is compatible with their applications. To test compatibility, the cc: Fusion Test Tool must be used to try to capture information from an application.

cc: Fusion has been compatible with applications written using versions of the items listed below:

- Win32
- Microsoft Foundation Class (MFC)
- Visual Basic 6
- Windows WinForms
- Java
- FoxPro
- WPF
- Flash
- Silverlight

Data has also been captured from within versions of

- Terminal emulators (green screen emulators)
- Adobe Acrobat Reader
- Internet Explorer
- FireFox

cc: Fusion is currently not compatible with Google Chrome and Microsoft Excel.

Microsoft Outlook is not fully supported. If message windows (i.e., popup windows) are opened from Outlook, the windows title number will not be identified consistently. Outlook arbitrarily assigns popup windows numbers (i.e., <wnd cls="_WwB" title="Document12"). For example, a message is opened, assigned Document1, and then closed. A second message is opened and assigned Document2. If the original message is reopened, it will be assigned the title Document3. Fusion cannot associate different captures from the original message.

Deployment and Redundancy Guidelines

CallCopy Sales Engineers consult with customers to determine the most effective deployment to meet performance, redundancy, and security needs. Some guidelines include

- cc: Fusion supports only one script per installation. In the typical installation, all users logging into a PC will automatically have the application running with that script.
- Bandwidth usage depends heavily on the number of users and the amount of data written to the database.
- Network layout (e.g., branches, firewalls) affects the application's ability to write data to the database.

Security

cc: Fusion relies on the security and auditing measures of cc: Discover, the Windows server hosting the applications, and the Windows PCs on which the desktop application is installed.

These points also must be considered:

- Access to script files should be restricted to administrators. If scripts are installed on PCs, users should not have Administrator permissions to the machines.
- In order for the Fusion application on the PC to log events, the user must have access to the Fusion log file's location. (See the *Fusion Log File* section.)
- See the *Install and Configure the Application* section for install permissions information.

No specific cc: Discover user permission settings have to be configured to enable cc: Fusion.

See the *cc: Discover Administration Guide* for information on the system's auditing.

Install and Configure the Application

This section explains how to install and configure the cc: Fusion application. Once it is installed on a PC, the application can be used by any user that logs into the PC.

Permissions Needed for Installation

The installer must have Administrator permissions on the client PC.

The Administrator must have permission to modify or access these registry settings:

- HKEY_LOCAL_MACHINE\SOFTWARE
- HKEY_LOCAL_MACHINE\SOFTWARE\Classes\CLSID\
- HKEY_LOCAL_MACHINE\SOFTWARE\Microsoft\Windows\CurrentVersion\Run
- HKEY_LOCAL_MACHINE\SOFTWARE\JavaSoft\Java Runtime Environment – The installer does not modify any value under this setting. It accesses it for reading java version and java_home value.

Fusion Log File

The location of the Fusion log file (FusionLog_yyyy_mm_dd.log) is configured during installation. The user being recorded must have access the directory where the file is located in order for logging to occur.

- For most versions of Windows, the file is stored in the user's application data directory (%appdata%).
- For Windows XP, the file is stored here: [SYSTEM_DRIVE]:\Documents and Settings\[CURRENT_USER]\Application Data.

Note CallCopy does not recommend the following option because of possible inconsistency in configuring multiple PCs and the resulting problems that can occur in recording and software maintenance.

If administrators do not want users to have access to the %appdata% or Application Data directories, log files can be written to another location.

1. Create the alternate directory.
2. Assign the user Full Control to this directory.
3. After Fusion is installed, confirm that NLog.config has the correct path to the directory. Example:

`filename=D:path_name.`

```
<targets>
  <target name="logfileDebug" xsi:type="File"
    fileName="${specialfolder:folder=ApplicationData}\FusionLog_${shortdate}.txt" />
</targets>
```

4. Confirm that the Fusion.ini file's Logging:Location setting has the directory path. (See the *Configure Fusion INI* section.)

The NLog.config and Fusion.ini files will be located in the directory where you install Fusion.

Uninstall the Application

Before installing a new version of the application, older versions must be uninstalled. Follow these steps to uninstall the software.

1. Open the Add/Remove Programs applet in the Control Panel.
2. Click CallCopy Fusion Software from the programs list.
3. Click Uninstall.
4. You will be prompted to remove the software. Click Yes.

The software will be automatically uninstalled, and the entry on the Programs list will be removed once the process is complete.

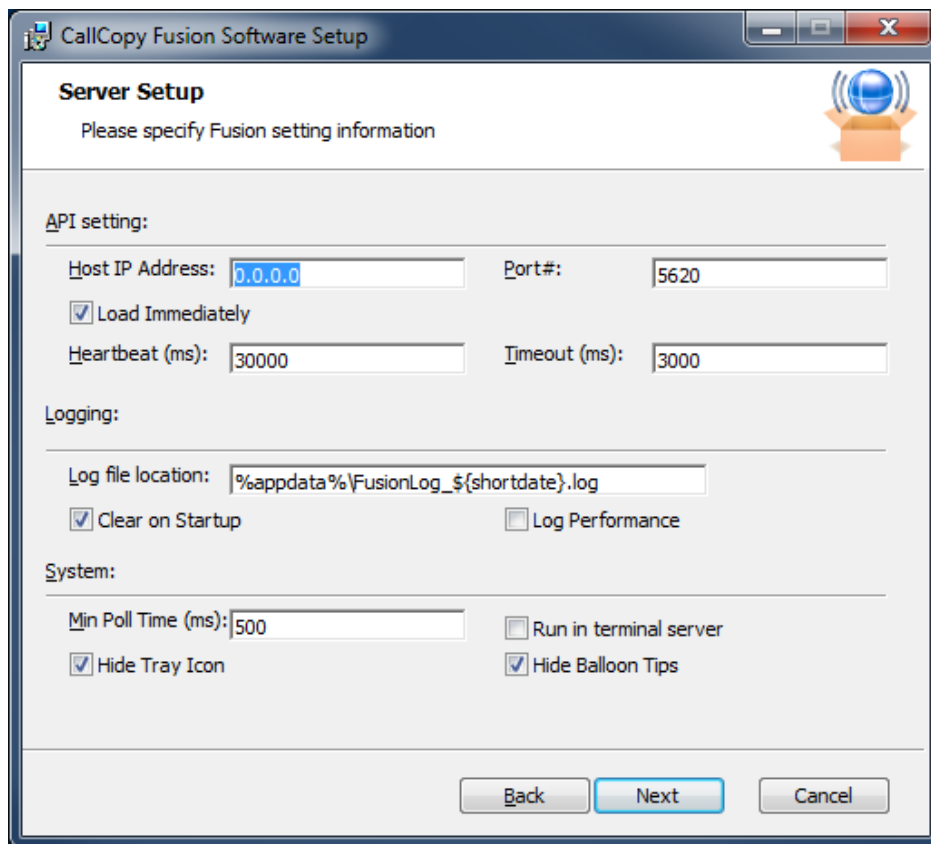
Run the Installation Package

Note If a new version of the application is installed on a machine with an older version, the existing scripts must be tested and probably edited to work with the new application.

Note Uninstall older versions of the application before installing a newer version.

Follow these steps for manually installing the cc: Fusion application.

1. Logon to the PC using an account with Administrator privileges.
2. Access the FusionSetup.msi file and double-click it. The MSI file can be located on the PC or a remote location.
3. On the Welcome step, click Next.
4. Accept the Licensing Agreement. Click Next.
5. Do not change any settings on the Custom Setup step. Click Next.
6. On the Server Setup, configure the API server and client settings. See *Configure the INI File* section for definitions of each setting.
 - Log file location – CallCopy strongly recommends not changing this location. (See the *Fusion Log File* section for more information.)
 - Hide Balloon Tips – This option also can be set by users by right-clicking the Fusion icon in the system tray and selecting Hide Balloon Popups.



7. Click Install.
8. If Windows prompts to allow the installer to run, click Yes.

9. Click Finish.

By default, the installer creates this directory with the application files: c: Program Files\CallCopy\Fusion.

Note Windows Installer Error 160 – This is a general error code that indicates a problem occurred during the installation. During cc: Fusion installation, this error may occur if the installer does not have adequate permissions, especially for the registry. In order for better trouble shoot this general error code, enable Windows Installer logging, which will allow you to view a log of all attempts and failures related to an installation. You can disable it after the installation is complete.

Configure the INI File

The application settings are read from a configuration file that is stored in the application installation directory. The file is named **Fusion.ini**.

[CallCopy]	
Host=0.0.0.0	API server host IP address and port number.
Port=5620	
LoadImmediately=true	If set to 'true', the application connects to the API server when it starts. If set to 'false', the application does not connect until the first time the Fusion script detects content that should be blacked out or recorded.
Heartbeat=3000	Frequency in milliseconds (ms) that the application sends a 'heartbeat' message to the API server to test the connection.
ReadTimeout=3000	Time in milliseconds (ms) that the application waits for a read response from the API server. If this time is exceeded, the application throws an exception.
SendTimeout=3000	Time in milliseconds (ms) that the application waits for a send response from the API server. If this time is exceeded, the application throws an exception.
[Logging]	
Location=%appdata%\FusionLog_\${shortdate}.log	CallCopy strongly recommends not changing this location. The default entry creates a different log for each day, which is useful for troubleshooting. It also is accessible for both PC and terminal server uses. Changing the entry may cause logs not to be written for all users. To change this value, set the value in the NLog.config file and then update this setting.
ClearOnStartup=true	Clear the log file on application startup.
LogPerformance=false	Log script execution metrics to the log file.
[System]	
MinPollTime = 500	Forces a minimum polling interval for checking the user's screen for content to block or record, overriding the script setting. Time in milliseconds (ms).
HideTrayIcon=true	Hides/displays the Fusion icon in the system tray.
HideBalloonTips=true	Prevents/enables balloon tips from popping up.
RunInTerminalServer=false	Only needed for users running terminals.
MaxRamAllow=150000000	Maximum bytes of RAM Fusion can use.

Install Java Support

Note These instructions are for 64-bit Windows PCs.

If cc: Fusion will be used to capture any data from Java based applications, Java Access Bridge (JAB) software must be enabled on the PC. JAB is a library that allows Microsoft based applications to interact with Java based applications. Fusions uses Screen Scraper Studio's ScreenScrapeJavaSupport executable to install JAB software for Java Runtime Environments (JREs).

More information is available at <http://www.oracle.com/technetwork/java/javase/tech/index-jsp-136191.html>

Find the JRE Path

Each Java application on a PC may use a different JRE. The path for each JRE used must be identified.

1. From the Start menu, run regedit.
2. Navigate to HKEY_LOCAL_MACHINE\SOFTWARE\JavaSoft\Java Runtime Environment.
3. Click the default JRE to display its properties. The JavaHome property shows the path needed to install JRE support.

Install Support for the JRE

1. On the client machine, open a command prompt.
2. Navigate to c:\Program Files(x86)\CallCopy\Fusion\ScrapperLib\Java Support.
3. Run this command using the path located earlier:

```
ScreenScrapeJavaSupport.exe /install /jrepath "<path>"
```

4. If prompted by Windows to approve running the install, click Yes.

Note If screen scrape support must be uninstalled, run this command:

```
ScreenScrapeJavaSupport.exe /uninstall /jrepath "<path>"
```

Test Java Support

After the tasks above are completed, the installation must be tested for each Java application from which data will be captured. Testing involves attempting to capture window information for an application. See the *Capture Window ID* section of the *cc: Fusion Scripts Guide* for instructions on capturing the necessary application information.

If no Window information is captured or only the Window frame/header information is captured

- JAB support is not enabled for the JRE the application uses. In this case, repeat the tasks above to identify the JRE path and run the Screen Scrape executable.
- The application was created using an early Java version. In this case, Fusion may not be able to work with the application. CallCopy Development will have to investigate the customer's application to determine a conclusive answer.
- The application may be a network application. CallCopy Development would have to investigate.

Security and PCI Compliance

Interactions between the cc: Discover suite components (e.g., servers, Web Portal), file servers, and archive devices use SSL and TLS for data in transit, which is encrypted to disk when written. More information on cc: Discover's PCI Compliance status and how to configure components to utilize encryption/SSL/TLS is available in the *cc Discover Administration Manual*.

Troubleshooting

This section provides troubleshooting guidance that can be used by both administrators and script programmers.

Screen/Application Flickers When Fusion Pulls Data

If users experience this issue, try to capture using the fulltext method instead of the native method. In some applications, the native setting sometimes causes the application to repaint. This is the flicker that is sometimes visible.

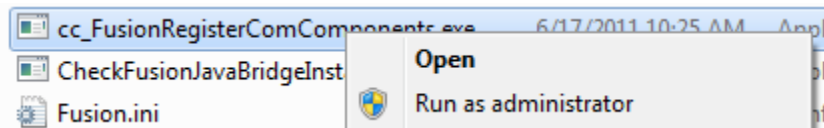
When switching to fulltext, you may need to create a new capture identifier.

COM Class Error

If you see a COM class error, then the COM components didn't register properly. This is usually caused by the client application not being installed as a system administrator account.

Plan A: Run the COM Component Registration Fix Utility

To fix this automatically, run the application `cc_FusionRegisterComComponents.exe` with administrator privileges. To do this, right-click the executable and select "Run as administrator". Select "Yes" or "Allow" on any popup dialogs. After running the application, try running `cc: Fusion` again.



Plan B: Register the COM Components Manually

You can always register the COM components manually. To do this, open a command prompt in privileged mode: Right click on a command prompt shortcut and select Run as administrator.

TCaptureX.dll, **TSelection.dll**, **UIElement.dll** and **SSSystemObj.dll** will need to be registered. These will be located in the ScrapperLib subfolder where fusion is installed

Registration on 64-bit

```
%windir%\syswow64\regsvr32 <fusion path>\ScrapperLib\TCaptureX.dll
%windir%\syswow64\regsvr32 <fusion path>\ScrapperLib\UIElement.dll
%windir%\syswow64\regsvr32 <fusion path>\ScrapperLib\TSelection.dll
%windir%\syswow64\regsvr32 <fusion path>\ScrapperLib\SSSystemObj.dll
%windir%\system32\regsvr32 <fusion path>\ScrapperLib\TCaptureX_x64.dll
%windir%\system32\regsvr32 <fusion path>\ScrapperLib\UIElement_x64.dll
%windir%\system32\regsvr32 <fusion path>\ScrapperLib\TSelection_x64.dll
%windir%\system32\regsvr32 <fusion path>\ScrapperLib\SSSystemObj_x64.dll
```

Registration on 32-bit (x86)

```
%windir%\system32\regsvr32 <fusion path>\ScrapperLib\TCaptureX.dll
%windir%\system32\regsvr32 <fusion path>\ScrapperLib\UIElement.dll
%windir%\system32\regsvr32 <fusion path>\ScrapperLib\TSelection.dll
%windir%\system32\regsvr32 <fusion path>\ScrapperLib\SSSystemObj.dll
```


About CallCopy

CallCopy, a leading provider of innovative call recording and contact center solutions, is dedicated to ensuring the highest standards of customer and employee satisfaction. The award-winning, enterprise-proven cc: Discover suite delivers advanced call recording, screen capture, quality management, speech analytics, performance management, customer survey and workforce management capabilities to organizations of all sizes and industries across the globe.

CallCopy empowers these organizations to gather business intelligence, which is leveraged to maximize operational performance, reduce liability, achieve regulatory compliance and increase customer satisfaction.

For more information, visit www.callcopy.com.