

# inContact On-Demand User Guide for Premises 16.2

---

[www.incontact.com](http://www.incontact.com)

## inContact On-Demand User Guide for Premises 16.2

- **Version** — 16.2
- **Revision** — June 2016
- **About inContact** — inContact (NASDAQ: SAAS) is leader in cloud contact center software, helping organizations around the globe create customer and contact center employee experiences that are more personalized, more empowering and more engaging today, tomorrow and in the future. inContact focuses on continuous innovation and is the only provider to offer core contact center infrastructure, workforce optimization plus an enterprise-class telecommunications network for the most complete customer journey management. inContact offers customers a choice of deployment options. To learn more, visit [www.inContact.com](http://www.inContact.com).
- **Copyright** — ©2016 inContact, Inc.
- **Disclaimer** — inContact reserves the right to update or append this document, as needed.
- **Contact** — Send suggestions or corrections regarding this guide to [documentationsrequest-discover@incontact.com](mailto:documentationsrequest-discover@incontact.com).

# Table of Contents

---

- Introduction ..... 5**
  - Audience.....5
  - Goals.....5
  - Assumptions.....5
  - Need-to-Knows .....5
- Installing the inContact WFO On-Demand Client ..... 6**
  - Before You Install .....6
    - Uninstall Old Clients ..... 6
    - Enable .NET 3.5 (Windows 8.1 Only)..... 6
    - Configure the User Account..... 7
    - Locate the On-Demand Client Installer ..... 7
  - Install the inContact WFO On-Demand Client .....8
    - Silent Options for Installing the inContact WFO On-Demand Client ..... 9
  - Configure the inContact WFO On-Demand Client INI File ..... 10
  - Security and PCI Compliance..... 11
- Using the inContact WFO On-Demand Client ..... 12**
  - inContact WFO On-Demand Overview ..... 12
  - Start/Stop Audio Recording ..... 13
  - Start/Stop Blackout ..... 14
  - Update Call Records..... 14
  - Check Status..... 15
  - inContact WFO On-Demand Client Settings ..... 16

Configure Device Settings.....	16
Configure Servers Settings.....	17
Configure System Settings.....	18
Close the Application.....	19
Obtain Client Logs for inContact WFO Support.....	19
<b>Document Revision History .....</b>	<b>20</b>

## Introduction

---

### Audience

This document is designed for administrators who will install the inContact On-Demand client application, as well as for those who will use inContact On-Demand, in Premises deployments. Readers should have a basic level of familiarity with usage of a PC and its peripherals, the Windows operating system, and inContact Call Recording. Readers who will install the client application should additionally be familiar with installing Windows applications, with their network environment, and with the desired configuration and use of on-demand recording in their organization.

### Goals

The goal of this document is to provide knowledge, reference, and procedural information necessary to install the inContact On-Demand Client and use inContact On-Demand. The document is NOT intended as a specific system or network design document.

### Assumptions

This document assumes that inContact WFO has been installed and integrated with your PBX if applicable. It also assumes that your application administrator has configured the application for use based on your business rules and environment. This includes configuring user accounts, schedules, and so forth, for the use of inContact On-Demand. See the *inContact WFO Administration Manual* for details.

### Need-to-Knows

Several inContact WFO features use pop-up menus and other windows that may be considered as “pop-ups” by some browsers. inContact recommends that you configure your browser to allow pop-ups for the inContact WFO site.

Tasks described in this manual may be limited by permissions. If you need to perform a task and are unable to do so, see your supervisor or inContact WFO administrator.

The inContact On-Demand client is not aware of RTP, and will not start, stop, or otherwise alter recording status explicitly based on any RTP events. If your integration relies on RTP, discuss this with your inContact WFO administrator, inContact WFO Support, or both.

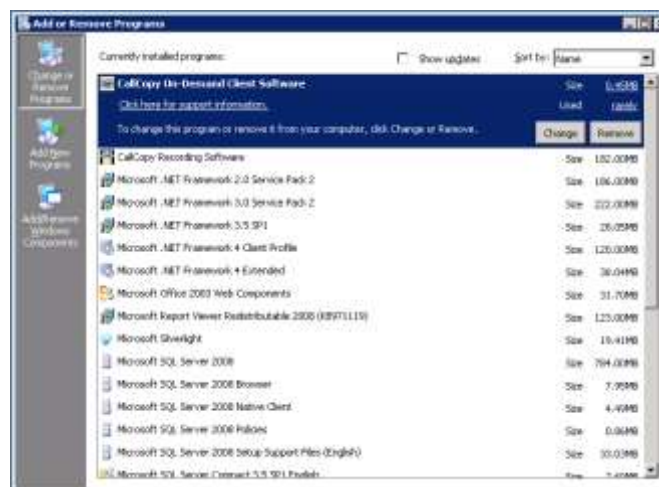
## Installing the inContact On-Demand Client

**i** This section is designed for administrators or other personnel who will install the inContact On-Demand Client.

### Before You Install

#### Uninstall Old Clients

If you are upgrading from a previous version of inContact WFO, you must remove any old versions of the client before new versions are installed. You can do this by using the Add/Remove Programs functionality in the Windows Control Panel. The software is labeled "CallCopy On-Demand Client Software".



#### Enable .NET 3.5 (Windows 8.1 Only)

The inContact On-Demand installer requires .NET 2.0 on the client PC. This version is included in the .NET 3.5 framework, which is not enabled by default in Windows 8.1. To enable .NET 3.5 in the Windows Control Panel:

1. Press the Windows logo key on your keyboard to display the **Start** screen and then type and choose **Control Panel**.
2. Choose **Programs** and then choose **Turn Windows features on or off**.
3. Select the checkbox for **.NET Framework 3.5 (includes .NET 2.0 and 3.0)**.

For additional information, search the phrase "Installing the .NET Framework 3.5 on Windows 8 or 8.1" on the Microsoft website.

## Configure the User Account

---

The user account running the client (or a security group of which the user is a member) must have read/write access to the following folders and their subdirectories on the workstation where the client is installed:

- **Logs directory** — C:\Users\[username]\AppData\Roaming\inContact\OnDemand\Logs
- **INI directory** — C:\Program Files\inContact\OnDemand

## Locate the On-Demand Client Installer

---

The client installer can be obtained from any inContact WFO server by browsing to:

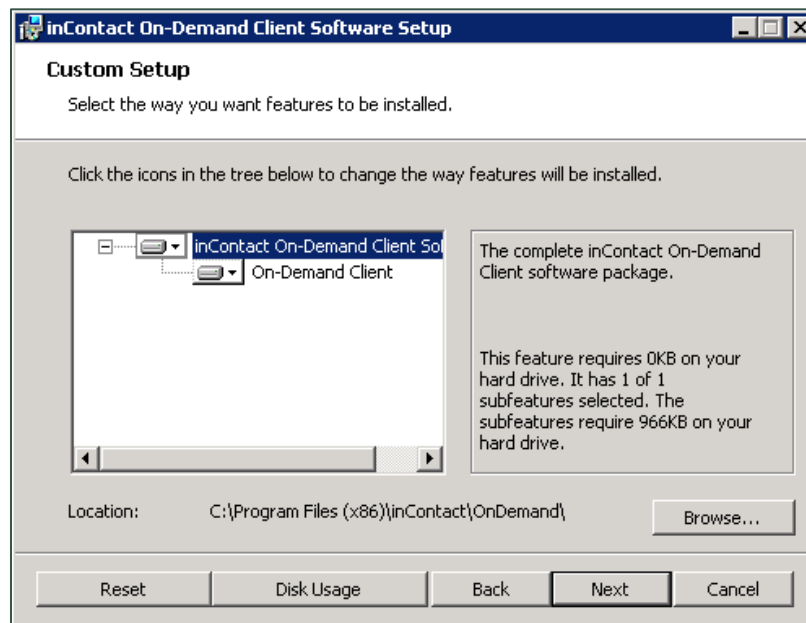
**C:\Program Files (x86)\CallCopy\Installers\**

The application installer is named "**inContact On-Demand Client Setup.msi**".

## Install the inContact On-Demand Client

To install the On-Demand Client:

1. Copy the installation MSI file to the destination PC.
2. Double-click the MSI file and click **Next** to continue on the Setup Wizard screen.
3. Select the checkbox accepting the License Agreement and click **Next**.
4. To configure the directory where the client software will be installed, click the **Browse** button and select a folder.
5. **Optional:** To verify the workstation has enough disk space to install the software, click the **Disk Usage** button.



6. Click **Next**.
7. In the **Host IP Address** field, type the IP address of the On-Demand Server host to which the client will connect. If multiple servers are used, type the address for the primary server.
8. Click **Next** and then click **Install**.
9. Click **Finish**.

The inContact On-Demand software will launch automatically during the next Windows startup.



## Silent Options for Installing the inContact On-Demand Client

The client installer also has options to install silently, with no user intervention required or allowed. The installer uses standard Windows Installer options available by running the "**msiexec.exe**" application, as shown in this example:

### Install Options

```
</package | /i> <Product.msi>
```

Installs or configures a product

```
/a <Product.msi>
```

Administrative install - Installs a product on the network

```
/j<u|m> <Product.msi> [/t <Transform List>] [/g <Language ID>]
```

Advertises a product - m to all users, u to current user

```
</uninstall | /x> <Product.msi | ProductCode>
```

Uninstalls the product

### Display Options

```
/quiet
```

Quiet mode, no user interaction

```
/passive
```

Unattended mode - progress bar only

```
/q[n|b|r|f]
```

Sets user interface level

n - No UI

b - Basic UI

r - Reduced UI

f - Full UI (default)

```
/help
```

```
Help information

Restart Options

    /norestart

        Do not restart after the installation is complete

    /promptrestart

        Prompts the user for restart if necessary

    /forcerestart

        Always restart the computer after installation
```

Using these parameters, you can install the software automatically and require the computer to be restarted after the installation. An example command for that configuration would be:

```
Msiexec.exe /i "C:\ CallCopy On-Demand Client Setup.msi" /passive
/forcerestart
```

This command must be run from the command prompt to process properly. If the silent install is used with default settings, the configuration settings will not be set to connect to any server. The configuration files must be modified afterwards, or the MSI package will need to be extracted, and the configuration file replaced.

## Configure the inContact On-Demand Client INI File

The client settings are stored and read from a configuration file that is stored in the client installation directory. The file is named **cc\_OnDemandClient.ini**. The INI filename should always match the name of the executable it configures. This file contains the settings configured during installation.

In most cases, you will not need to make any changes to the INI file. However, there may be times when you are asked to do so under the supervision of inContact Support.

For reference, inContact On-Demand Client INI settings and their default values (if applicable) are shown on the left in the following table, with additional explanation of the settings detailed on the right.

[server]	
host=127.0.0.1	Specifies the IP address of the On-Demand Server to which this client should connect.
port=2007	Specifies the TCP Port used to connect to the On-Demand Server.
[logging]	
Level=DEBUG	Specifies the application logging level. The "debug" level gathers more client information but may cause performance issues. Set the value to "error" if you want to log only error messages.

## Security and PCI Compliance

Interactions between inContact WFO components (for example, servers and the Web Portal), file servers, and archive devices can use SSL and TLS for data in transit, which is encrypted to disk when written. More information on inContact WFO's PCI Compliance status and how to configure components to utilize encryption/SSL/TLS is available in online help for inContact WFO or in the *inContact WFO Administration Manual*.

## Using the inContact On-Demand Client

**i** This section is designed for agents and inContact WFO end users who use the On-Demand Client as part of their daily work.

### inContact On-Demand Overview

inContact On-Demand for Premises is a client/server application that allows you to do one or more of the following from your desktop, depending on how your organization has configured the inContact WFO system:

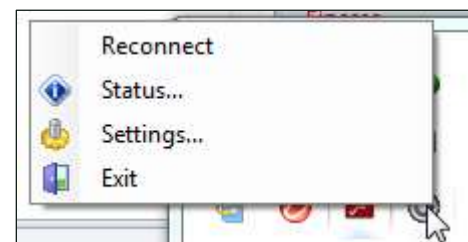
- Initiate or stop recording of your calls. For example, some agents may only need to record certain types of calls, or some agents may receive calls that should not be recorded, such as personal calls.
- Initiate or stop blackouts. For example, an agent could initiate a blackout prior to collecting sensitive health or credit card information.
- Add information to the database call record, such as caller name or subject of the call.

When the inContact On-Demand Client launches, it tries to connect to the server (or servers) configured during installation. A balloon tip will tell you the status of the connection attempt.



If the connection fails at start-up, or if there is a disruption in the server that causes a disconnection, an error message appears. The application will continue to try to reconnect every 10 seconds.

After ten failed reconnect attempts, the client will enter standby mode, and you will need to select **Reconnect** from the menu to try again. If the client is not connected to the server, you will not be able to record, the On-Demand icon will be disabled, and On-Demand menu choices will be limited as shown here.



When connected, the client sends the local machine's currently logged in username and domain (if any), as well as the machine's name, to the designated On-Demand server.

Some organizations use inContact On-Demand to supplement fulltime or QA recording that is controlled in other ways. In this scenario, you may be granted the "Notify On-Demand Recordings Only" permission so you can tell when the recordings you have initiated start and stop. Users with this permission can stop, blackout, or both on **only** those recordings they started with the On-Demand Client. The options will be disabled at all other times.

Both your user account and your workstation must be properly configured by your inContact WFO administrator before the client can be used. If the application can't find you by your username, it will display a "Login Failed" message.

You can verify your login by checking the Status menu or by watching the name that appears at login. **Using the incorrect account can cause recordings to be mislabeled or not recorded at all.**

## Start/Stop Audio Recording



To start call recording using inContact On-Demand:

- Right-click the On-Demand Client icon in the system tray and choose one of the options in the **Start Audio Recording** menu.

There are two available options, depending on the permissions set by your administrator:

- **By Device ID** (aka **By Extension** or **By Voice Port**): This method records calls using the actual physical device identifier and is available if your administrator has not selected to run in secure mode. Any calls made on that physical device are recorded. Depending on how your administrator has configured inContact On-Demand, you may be prompted to enter your device ID each time you log in to the client.
- **By Device Alias** (aka **By Agent Number**): This method uses an agent identifier, rather than a device identifier, to determine which calls are to be recorded. Typically, it requires the user to log in to the phone, and the login ID identifies the agent. This allows users to sit at different stations, while having the same identifier.

In most installations, **By Device ID (Extension)** is sufficient.

Once recording has started, it continues until the call is completed or is explicitly stopped when you:

- Right-click the On-Demand Client icon in the system tray and select **Stop Audio Recording**.

## Start/Stop Blackout

To trigger a blackout using the inContact On-Demand Client:

- Right-click the On-Demand Client icon in the system tray and choose **Start Blackout**.

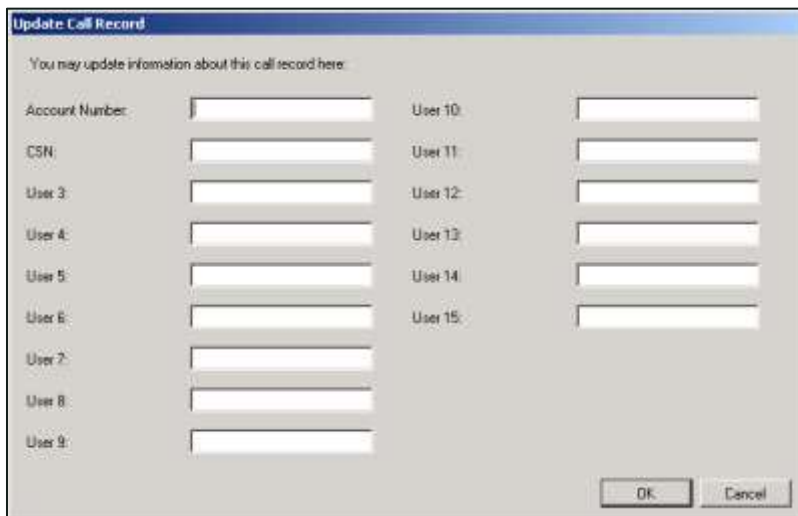
To end a blackout in the inContact On-Demand Client:

- Right-click the On-Demand Client icon in the system tray and choose **Stop Blackout**.

Blackouts can also be triggered automatically by using inContact Desktop Analytics or a similar third-party application. If your organization does not use automatic blackouts and you would like to learn more about this functionality, contact inContact WFO Support.

For more information on blackouts, see the "Blackout Sensitive Data" section of the *inContact WFO Administration Manual*.

## Update Call Records



inContact WFO offers fifteen custom information fields that can be configured for use with On-Demand, allowing you to insert or replace information about a call but not view previous information. Access to each field is controlled by permissions configured by your administrator. If you do not have permission to update any fields, the option to update call records will be disabled in your On-Demand Client.

To update a call record:

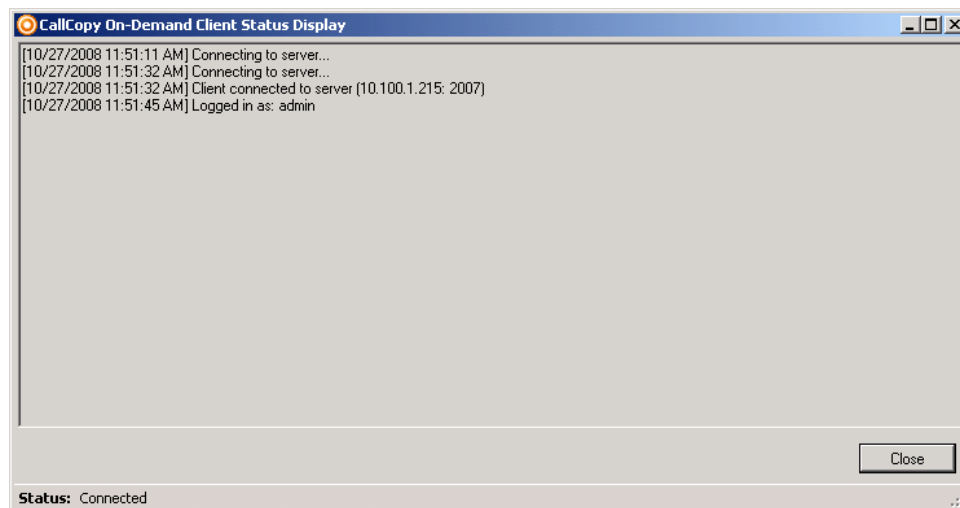
1. Right-click the On-Demand Client icon in the system tray and choose **Update Call Record**.
2. Update the desired field(s) and click **OK**.

**i** Do not use angle brackets (< or >) or these special characters and symbols (!, =, +, %) when updating call records. These characters can prevent updates from working.

## Check Status

While the On-Demand Client is running, it maintains a list of the actions it has performed, and the current state of the client. The client keeps track of the following events/actions and displays a balloon tip after each:

- Audio Recordings
- Desktop Recordings
- Connection Status
- Errors



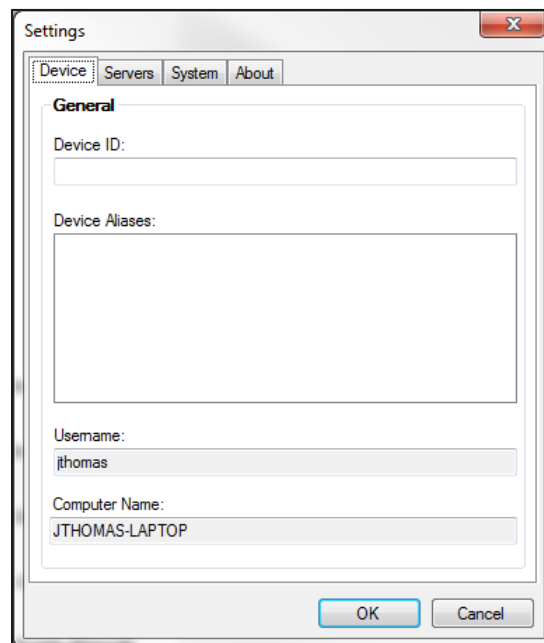
To check the status of the client:

- Right-click the On-Demand Client icon in the system tray and select **Status**.

## inContact On-Demand Client Settings

### Configure Device Settings

Settings on the **Device** tab allow you to change the physical device identifier (for example, the **Device ID** or voice port) associated with the client. The **Device** tab also shows any **Device Aliases** (agent identifiers such as agent ID or login) currently associated with recording, the **Computer Name**, and the currently logged in **Username**. You can configure this setting only if you have appropriate permissions. If you need to change the physical device identifier in your On-Demand Client and are unable to do so, talk to your inContact WFO administrator.



To configure the physical device associated with the On-Demand Client:

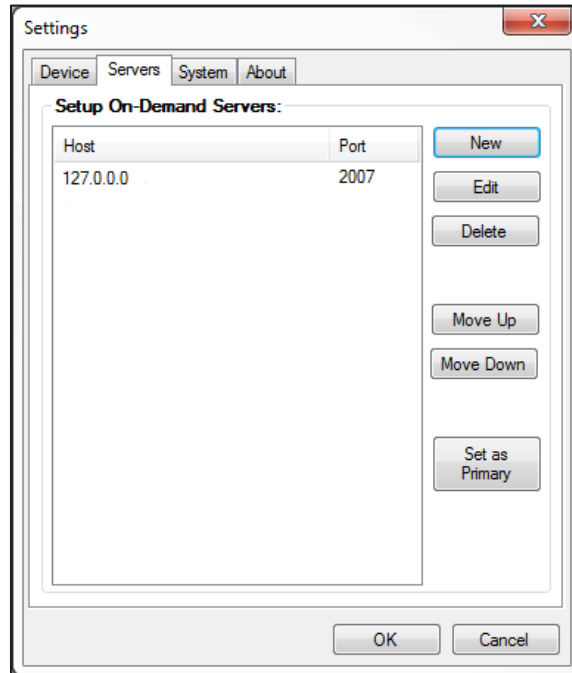
1. Right-click the On-Demand Client icon in the system tray and select **Settings**.
2. Click the **Device** tab.
3. Type the desired **Device ID** in the text field and then click **OK**.

When you change the physical device identifier (Device ID), a dialog box will appear warning that the Device ID must be restored to its previous value to stop recordings on that Device ID.



## Configure Servers Settings

Settings on the Servers tab allow you to add, delete, and prioritize the inContact On-Demand Server(s) with which this client communicates.



To communicate properly, the server **Host** setting must be set to the IP address or hostname of the inContact WFO Server. The **Port** is provided for diagnostic purposes only and cannot be changed through this interface.

When the server host is changed, the client breaks any existing connection and tries to reconnect using the updated address.

To add other servers for the client to access:

1. Right-click the On-Demand Client icon in the system tray and select **Settings**.
2. Click the **Servers** tab and then click **New**.
3. In the **Host** field, type the IP address of an On-Demand Server and click **OK**.
4. Click **OK** again.

The client will attempt to connect to the servers in the order in which they appear in the panel. To change this order:

1. Right-click the On-Demand Client icon in the system tray and select **Settings**.
2. Click the **Servers** tab.

3. Click a **Host** IP address in the On-Demand Servers pane and then click either **Move Up** or **Move Down**.
4. Repeat for other servers if needed.
5. When the servers appear in the correct order, click **OK**.

To designate one host as the main inContact On-Demand Server for this client to use:

1. Right-click the On-Demand Client icon in the system tray and select **Settings**.
2. Click the **Servers** tab.
3. Click a **Host** IP address in the On-Demand Servers pane and then click either **Set As Primary**.
4. Click **OK**.

To remove a host from the On-Demand Servers list:

1. Right-click the On-Demand Client icon in the system tray and select **Settings**.
2. Click the **Servers** tab.
3. Click the desired **Host** IP address and then click **Delete**.
4. Click **OK** and then click **OK** again.

## Configure System Settings

---

Settings on the System tab allow you to specify the level of logging for the On-Demand Client. The On-Demand Client logs store up to a week's worth of entries. These log files can be sent to inContact WFO Support to help resolve login issues, crashes, and other unexplained problems.

The level of detail the logs provide is determined by the **Logging Level**, with **ERROR** providing the least amount of detail and **DEBUG** providing the greatest. You can also turn **OFF** logging altogether. Unless instructed to do otherwise by your inContact WFO administrator or inContact WFO Support, do not change the logging level.

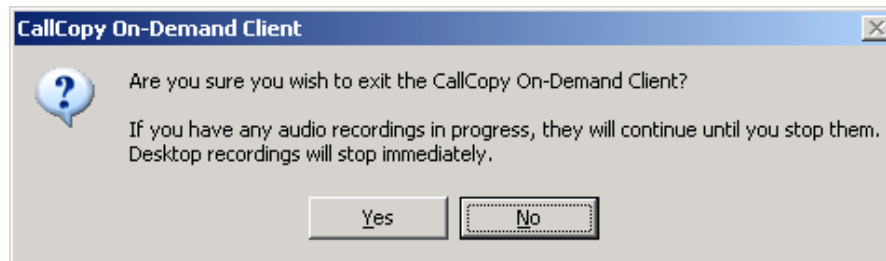
To configure system settings if necessary:

1. Right-click the On-Demand Client icon in the system tray and select **Settings**.
2. Click the **System** tab.
3. From the drop-down list, select the desired **Logging Level**.
4. Click **OK**.

## Close the Application

When you exit the On-Demand application, any current audio recordings will continue. However, desktop recordings will be cancelled. To exit the application:

- Right-click the On-Demand Client icon in the system tray and select **Exit**, then click **Yes**.



## Obtain Client Logs for inContact WFO Support

If problems occur with this application, you or your inContact WFO administrator may need to contact inContact WFO Support for further assistance. The Support team will need the latest On-Demand Client log files for use in troubleshooting. These logs can be found in and copied from:

**C:\Users\[username]\AppData\Roaming\inContact\OnDemand\Logs.**

The client log files are listed inside this directory, with one log file listed for each date the On-Demand client was running. The log files follow a *yyyy-mm-dd.log* format (for example, 2010-09-01.log).

## Document Revision History

---

Revision	Change Description	Effective Date
0	Initial version for this release	2016-03-01
1	Rebranded client installation content.	2016-04-04