



UPTIVITY API MANUAL, V5.4

April 2014

Reference Guide

www.uptivity.com

Security Classification: Uptivity Confidential.

Distribution: Approved internal Uptivity staff only and licensed Uptivity customers.

Note: Applicable non-disclosure agreements must be in force for authorization.

Revision History		
Revision	Change Description	Effective Date
0	Rebranded all content Added table of Deprecated Functions. EMPLOYEEID field character length now 50 characters.	04-30-2014

© Copyright 2014, Uptivity Inc. All rights reserved.

No part of this document may be transmitted or distributed, or copied, photocopied, scanned, reproduced, translated, microfilmed, or otherwise duplicated on any medium without written consent of Uptivity. If written consent is given, the same confidential, proprietary, and copyright notices must be affixed to any permitted copies as were affixed to the original. The information contained in this document does not constitute legal advice, and should not be considered a replacement for sound legal counsel. Uptivity shall be in no way liable for any use or misuse of the information presented herein.

Table of Contents

Introduction.....	6
Message Structure.....	6
New Functions	7
Deprecated Functions	7
Call Handling Functions.....	8
CALLSTART	8
CALLSTOP.....	10
CALLUPDATE	11
CALLUPDATE – Post Recording	13
RECORDSTART	14
RECORDSTOP.....	15
Status Functions	17
DEVICELIST.....	17
DEVICESTATUS.....	19
DEVICERECORDINGSTATUS.....	21
SYSTEMSTATUS.....	23
CHANNELS.....	24
STATIONS.....	26
FETCHTERMINOLOGY.....	27
CALLLIST.....	28
Recording Control Functions	31
CHATSTART	31
CHATSTOP.....	32
CHATUPDATE.....	33
BLACKOUTSTART/AGENTBLACKOUTSTART.....	34
BLACKOUTSTOP/AGENTBLACKOUTSTOP.....	35
Import Functions	36
IMPORTUSER	36
IMPORTAGENTPHONE.....	39

IMPORTWORKSTATION.....	40
User, Group, and Role Functions	41
ADDGROUP	41
MODIFYGROUPPERMISSION.....	42
MODIFYUSERGROUPPERMISSION.....	43
MODIFYROLE.....	44
MODIFYROLEGROUPPERMISSION.....	45
MODIFYUSERROLE.....	46
EMAIL	48
COMBINEDEMAIL.....	49
AGENTWINDOW.....	50
Results	51
Result Codes/Result Types	52
Parameter Definitions	54
Data Type Values	58
Uptivity WebAPI Service	64
General Architecture.....	64
TCP Port Settings.....	65
WebAPI Call Syntax	65
Example WebAPI Calls.....	66
Update a Call Record.....	66
Export a Recorded Audio File	66
Export Multiple Recorded Audio Files	68
Export Multiple Recorded Audio Files as a ZIP File	68
Event Interface	69
Request Command.....	69
Request Result Schema	69
CALLSTART Event.....	70
CALLSTOP Event	71
RECORDINGSTARTED Event	72
RECORDINGSTOPPED Event	73

RECORDINGUPDATE Event.....	73
RECORDINGPAUSED Event.....	74
RECORDINGRESUMED Event	75
About Uptivity	76

Introduction

The Uptivity API lets you add custom data to Discover records and integrate third-party applications with Discover. For example, you may want to store customer specific information with each call record, or perhaps you would like to specify when exactly to start and stop call recording based on specific events.

Discover allows administrators to customize field names and terminology in the Web Portal to fit your unique environment. Therefore, screen examples and field names used in this manual may differ from those seen in your implementation.

Message Structure

The Uptivity API can be used in any program written in any language that can communicate over TCP/IP. Messages are sent in a simple and descriptive XML format.

Additionally, commands can be sent via http requests using the WebAPI method.

Notes

- The Uptivity API Server is a standard blocking TCP server listening on port 5620. Usage is as simple as connecting to the port and sending a well-formatted XML request. You may then drop the connection, or stay connected to send another request.
- Messages that are sent should end with a carriage return / line feed character (\r\n or ASCII character #13 [Hex \$A]) to signal the end of data transmission.

Requests must be in a well-formed, complete XML format. The XML may contain white spaces, as they are stripped out by the server.

The root XML tag for the message should be the message type you are sending. Child nodes of the XML message will be attributes to the request. One common attribute that can be sent in every message is REQUESTID. (REQUESTID is required in every request message.)

Example:

```
<REQUEST>
  <TYPE>TEST</TYPE>
  <REQUESTID>1</REQUESTID>
</REQUEST>
```

In this example the message type is 'TEST'. This particular message can be used as an echo test to the server to ensure the availability of the server. The REQUESTID is a number that will be repeated back in the result message. The result for this message will look like the following:

```
<RESULT>
  <REQUESTID>1</REQUESTID>
  <REQUESTTYPE>TEST</REQUESTTYPE>
  <RESULTTYPE>API_OK</RESULTTYPE>
  <RESULTCODE>20</RESULTCODE>
  <RESULTMSG>API_OK</RESULTMSG>
</RESULT>
```

Note that the Uptivity API uses the DEVICEID to track phone states. This is true even in a free seating environment.

New Functions

No additional functions were added in this version of the Uptivity API Server.

Deprecated Functions

No additional functions were deprecated in this version of the Uptivity API Server. If a previously deprecated function is used, an error message will be returned stating the function is not supported.

Deprecated Function	Replacement Function	Effective Version
IMPORTSTATION	IMPORTWORKSTATION	5.3
MODECHANGE	N/A	5.0
EXTENSIONPLAYBACKSTART	N/A	5.0
EXTENSIONPLAYBACKSTOP	N/A	5.0
RECORDINGDEVICE	N/A	5.0
RECORDINGDEVICEALIAS	N/A	5.0
IMPORTAGENT	IMPORTUSER	5.0

Call Handling Functions

The call handling functions are used either to replace CTI integration or to supplement an existing CTI integration. These functions can be used to update the system with call information pertaining to the current statuses of the devices on your phone system.

The following messages follow the normal call flow path as messages from a CTI integration do. This means that the scheduler handles call recording decisions. Because of this, statistics can naturally also be gathered by the system.

CALLSTART

Description: Allows a user to specify that a device has started a new phone call. This information is used to update live displays.

Parameters:

- REQUESTID (required)
- DEVICEID *
- CALLINSTANCE
- DEVICEALIAS * +
- GROUP
- GATE
- ANI
- DNIS
- USER1 – USER15
- CALLID
- PRIORITY
- CALLDIRECTION
- MAXRECORDSILENCE
- MAXRECORDTIME
- AGENTINITIATED
- CTIINITIATED
- ARCHIVEACTION (this requires an archive action created in Discover)
- STATIONNAME *
- SYS_USER * +
- CRM_USER * +

At least one of the parameters marked with an asterisk (*) is required for the request to be executed.

Parameters marked with a plus sign (+) can be used only if a device ID has already been associated with an agent.

Returns:

- **API_ERROR_RECORDER_NOT_RUNNING:** If the API could not send the command to any of the related Cores.
- **API_PARTIAL_CORE_RESPONSE:** If the API was able to connect to some cores but not others the RESULTMSG will be 'CALLSTART could not be sent to the following cores: #,#,#'
- **API_OK:** If the API was able to connect to all cores the RESULTMSG will be 'CALLSTART sent to all of the following cores: #,#,#'

When sending a CALLSTART by DEVICEALIAS, SYS_USER, or CRM_USER, if a matching device isn't found, then this result is returned.

```
<RESULT>
<REQUESTTYPE>CALLSTART</REQUESTTYPE>
<REQUESTID>1</REQUESTID>
<RESULTTYPE>API_DEVICE_INVALID</RESULTTYPE>
<RESULTCODE>8</RESULTCODE>
<RESULTMSG>Could not find a device matching given parameters</RESULTMSG>
</RESULT>
```

STATIONNAME may be passed as the required item in place of DEVICEID. If DEVICEID is not passed or is passed as a blank value, Discover will look up the DEVICEID based on the value from the COMPUTERNAME field.

You may also pass the STATIONNAME to override the station mapping that is stored in the database for the DEVICEID.

CALLINSTANCE is used to distinguish the calls on the same device at the same time. If a CALLINSTANCE is not provided on CALLSTART, it will default to a blank CALLINSTANCE.

Example:

```
<REQUEST>
<TYPE>CALLSTART</TYPE>
<REQUESTID>1</REQUESTID>
<DEVICEID>555</DEVICEID>
<DEVICEALIAS>3545</DEVICEALIAS>
<GROUP>12</GROUP>
<GATE>80</GATE>
<ANI>6145551212</ANI>
<DNIS>8889225526</DNIS>
<USER1>Gold Level</USER1>
<USER2>Customer 564582</USER2>
</REQUEST>
<RESULT>
<REQUESTTYPE>CALLSTART</REQUESTTYPE>
<REQUESTID>1</REQUESTID>
<RESULTTYPE>API_DEVICE_INVALID</RESULTTYPE>
<RESULTCODE>8</RESULTCODE>
<RESULTMSG>Could not find a device matching given parameters</RESULTMSG>
</RESULT>
```

CALLSTOP

Description: Allows a user to specify that a device has ended phone call. This information is used to update System Status and Live Monitoring screens, as well as stop recording if the device is currently being recorded.

Parameters:

- REQUESTID (required)
- DEVICEID *
- CALLINSTANCE
- SYS_USER *+
- CRM_USER *+
- DEVICEALIAS *+
- STATIONNAME *

* At least one of the parameters marked with an * is required for the request to be executed.

+ These parameters can only be used if a device ID has already been associated with an agent.

Returns:

- **API_ERROR_RECORDER_NOT_RUNNING:** If the API could not send the command to any of the related cores
- **API_PARTIAL_CORE_RESPONSE:** If the API was able to connect to some cores but not others the RESULTMSG will be 'CALLSTOP could not be sent to the following cores: #,#,#'
- **API_OK:** If the API was able to connect to all cores the RESULTMSG will be 'CALLSTOP sent to all of the following cores: #,#,#'

Example:

```
<REQUEST>
  <TYPE>CALLSTOP</TYPE>
  <REQUESTID>2</REQUESTID>
  <DEVICEID>555</DEVICEID>
</REQUEST>
```

Returns: Standard result code

DEVICEALIAS, CRM_USER, and SYS_USER may be passed as the required item in place of DEVICEID. If DEVICEID is not passed or is passed as a blank value, Discover will look up the DEVICEID based on the value provided. If the call instance is not provided the call instance of the last call on this device is used.

CALLINSTANCE is used to distinguish which call the CALLSTOP is being issued to. If no CALLINSTANCE is provided on CALLSTOP, then the CALLINSTANCE of the last call on the device is used.

CALLUPDATE

Description: Allows a user to update information on a device that is currently on a phone call. This information is used to update live displays and reporting. This information will not be used by the call recording schedule because it is assumed that the call is in progress at this point. Prior to this message, a CALLSTART message must be sent. If UPDATE_IF_NOT_RECORDING is set to 'Y' and the device is not in a call, then it will update the last call that was recorded for the given device.

If DEVICEID is not present, it will be looked up by either CRM_USER or SYS_USER, whichever is present. If none are present, update will fail and return a RESULTTYPE of API_DEVICE_INVALID.

Parameters:

- REQUESTID (required)
- DEVICEID *
- CALLINSTANCE
- CRM_USER *+
- SYS_USER *+
- DEVICEALIAS *+
- STATIONNAME *
- GROUP
- GATE
- ANI
- DNIS
- USER1 – USER15 **
- CALLDIRECTION
- ARCHIVEACTION (this must be an archive action created in Discover)
- KEEP_DAYS
- UPDATE_IF_NOT_RECORDING

* At least one of the parameters marked with an * is required for the request to be executed.

+ These parameters can only be used if a device ID has already been associated with an agent.

** Using angle brackets (< >), some special characters, and symbols in these fields may not work correctly. Test all possible characters needed before using this function.

Returns:

- **API_ERROR_RECORDER_NOT_RUNNING:** If the API could not send the command to any of the related cores.
- **API_PARTIAL_CORE_RESPONSE:** If the API was able to connect to some cores but not others the RESULTMSG will be 'CALLSTART could not be sent to the following cores: #,#,#'
- **API_OK:** If the API was able to connect to all cores the RESULTMSG will be 'CALLSTART sent to all of the following cores: #,#,#'
- **API_RECORDID_INVALID:** If Update_If_Not_Recording is set and there was not a previous call to update.
- **API_DATABASE_QUERY_ERROR:** If the API doesn't successfully update a recording in the recordings table.

Call Handling Functions

Example:

```
<REQUEST>
  <TYPE>CALLUPDATE</TYPE>
  <REQUESTID>1</REQUESTID>
  <DEVICEID>555</DEVICEID>
  <USER3>Follow up on order</USER3>
</REQUEST>

<RESULT>
  <REQUESTTYPE>CALLUPDATE</REQUESTTYPE>
  <REQUESTID>1</REQUESTID>
  <RESULTTYPE>API_OK</RESULTTYPE>
  <RESULTCODE>20</RESULTCODE>
  <RESULTMSG>CALLUPDATE sent to all of the following cores: 1</RESULTMSG>
</RESULT>

<REQUEST>
  <TYPE>CALLUPDATE</TYPE>
  <REQUESTID>3</REQUESTID>
  <DEVICEID>555</DEVICEID>
  <USER3>Follow up on order</USER3>
  <UPDATE_IF_NOT_RECORDING>Y</UPDATE_IF_NOT_RECORDING>
</REQUEST>

<RESULT>
  <REQUESTTYPE>CALLUPDATE</REQUESTTYPE>
  <REQUESTID>3</REQUESTID>
  <RESULTTYPE>API_OK</RESULTTYPE>
  <RESULTCODE>20</RESULTCODE>
  <RESULTMSG>Updated recording in database</RESULTMSG>
</RESULT>
```

Note CALLINSTANCE is used to distinguish which call the CALLUPDATE is being issued to. If no CALLINSTANCE is provided on CALLUPDATE then the CALLINSTANCE of the last call on the device is used.

CALLUPDATE – Post Recording

Description: Allows a user to update information about a call that has finished recording. This information is used to update the recording database. This information **will not** be used by the scheduling or archive systems because it is assumed that the call is completed at this point. By passing a RecordID parameter, it is assumed the call update is for a call post recording.

Parameters:

- REQUESTID (required)
- RECORDID (required)
- DEVICEID
- DEVICEALIAS
- GROUP
- GATE
- ANI
- DNIS
- USER1 – USER15 **
- CALLDIRECTION

** Using angle brackets (< >), some special characters, and symbols in these fields may not work correctly. Test all possible characters needed before using this function.

Returns: Standard result code on success.

- **API_OK:** If successful.
- **API_REQUESTID_INVALID:** If the REQUESTID is invalid.
- **API_DATABASE_QUERY_ERROR:** If the API doesn't successfully update a recording in the recordings table.

Example:

```
<REQUEST>
  <TYPE>CALLUPDATE</TYPE>
  <REQUESTID>1</REQUESTID>
  <RECORDID>554853</RECORDID>
  <USER4>Sales Call</USER4>
</REQUEST>
```

RECORDSTART

Description: Allows a user to start an additional, partial recording for a call that is already being recorded.

Parameters:

- REQUESTID (required)
- DEVICEID *
- CALLINSTANCE
- DEVICEALIAS * +
- GROUP
- GATE
- ANI
- DNIS
- CALLID
- PRIORITY
- CALLDIRECTION
- MAXRECORDSILENCE
- MAXRECORDTIME
- AGENTINITIATED
- CTIINITIATED
- ARCHIVEACTION (this must be an archive action created in Discover)
- STATIONNAME *
- SYS_USER * +
- CRM_USER * +
- USER1-USER15 **

At least one of the parameters marked with an * is required for the request to be executed.

Parameters marked with a plus sign (+) can be used only if a device ID has already been associated with an agent.

Returns:

- **API_ERROR_RECORDER_NOT_RUNNING:** If the API could not send the command to any of the related cores.
- **API_PARTIAL_CORE_RESPONSE:** If the API was able to connect to some cores but not others the RESULTMSG will be `'CALLSTART could not be sent to the following cores: #,#,#'`
- **API_OK:** If the API was able to connect to all cores the RESULTMSG will be `'CALLSTART sent to all of the following cores: #,#,#'`

When sending a callstart by DEVICEALIAS, SYS_USER, or CRM_USER, if a matching device isn't found, then this result is returned.

```
<RESULT>
  <REQUESTTYPE>RECORDSTART</REQUESTTYPE>
  <REQUESTID>1</REQUESTID>
  <RESULTTYPE>API_DEVICE_INVALID</RESULTTYPE>
  <RESULTCODE>8</RESULTCODE>
  <RESULTMSG>Could not find a device matching given parameters</RESULTMSG>
</RESULT>
```

Example Request

```
<REQUEST>
<TYPE>RECORDSTART</TYPE>
<REQUESTID>1</REQUESTID>
<DEVICEID>555</DEVICEID>
<DEVICEALIAS>3545</DEVICEALIAS>
<GROUP>12</GROUP>
<GATE>80</GATE>
<ANI>6145551212</ANI>
<DNIS>8889225526</DNIS>
<USER1>Gold Level</USER1>
<USER2>Customer 564582</USER2>
</REQUEST>
```

Example Result

```
<RESULT>
<REQUESTTYPE>RECORDSTART</REQUESTTYPE>
<REQUESTID>2060</REQUESTID>
<RESULTTYPE>API_OK</RESULTTYPE>
<RESULTCODE>20</RESULTCODE>
<RESULTMSG>RECORDSTART sent to all of the following cores: 1</RESULTMSG>
</RESULT>
```

RECORDSTOP

Description: Used with RECORDSTART. Allows a user to specify that a phone call on a device has ended. This information is used to update System Status and Live Monitoring screens, as well as stop recording if the device is currently being recorded.

Parameters:

- REQUESTID (required)
- DEVICEID *
- CALLINSTANCE
- SYS_USER *+
- CRM_USER *+
- DEVICEALIAS *+
- STATIONNAME *
- USER1-USER15**

* At least one of the parameters marked with an * is required for the request to be executed.

+ These parameters can only be used if a device ID has already been associated with an agent.

**See parameter definitions.

Call Handling Functions

Returns:

- **API_ERROR_RECORDER_NOT_RUNNING:** If the API could not send the command to any of the related cores.
- **API_PARTIAL_CORE_RESPONSE:** If the API was able to connect to some cores but not others the RESULTMSG will be 'CALLSTOP could not be sent to the following cores: #,#,#'
- **API_OK:** If the API was able to connect to all cores the RESULTMSG will be 'CALLSTOP sent to all of the following cores: #,#,#'

Example Request

```
<REQUEST>
  <TYPE>CALLSTOP</TYPE>
  <REQUESTID>2</REQUESTID>
  <DEVICEID>555</DEVICEID>
  <USER1>test</USER1>
  <USER3>1</USER3>
</REQUEST>
```

Example Result

```
<RESULT>
  <REQUESTTYPE>RECORDSTOP</REQUESTTYPE>
  <REQUESTID>2060</REQUESTID>
  <RESULTTYPE>API_OK</RESULTTYPE>
  <RESULTCODE>20</RESULTCODE>
  <RESULTMSG>RECORDSTOP sent to all of the following cores: 1</RESULTMSG>
</RESULT>
```


Status Functions

The status functions allow you to receive current information from the system. This information can be used to track system, channel, or phone states and to write custom monitors for the system.

The following messages are informational only and do not affect the process of recording on the system

DEVICELIST

Description: Queries the system for a current list of phones/devices, and the current information associated with the devices. The current status of any device that Discover is aware of is kept in memory on the system. This function returns only one instance on a device. See DEVICERECORDINGSTATUS.

Parameters:

- DEVICELIST
- REQUESTID

Returns: RESULT section plus an additional section containing a DEVICE section containing:

- DEVICEID
- DEVICEALIAS
- SYS_USER
- CRM_USER
- GROUP
- GATE
- ANI
- DNIS
- USER1 – USER15
- CALLID
- CALLDIRECTION
- STATIONNAME
- ISTRUNK
- STARTTIME
- STOPTIME
- COREIDENT
- RECORDING section:
 - ISRECORDING
 - ISRECORDINGVIDEO
 - FILENAME
 - SESSIONID
 - CALLINSTANCE

Example Result:

```

<RESULT>
  <REQUESTTYPE>DEVICELIST</REQUESTTYPE>
  <REQUESTID>1</REQUESTID>
  <RESULTTYPE>API_OK</RESULTTYPE>
  <RESULTCODE>20</RESULTCODE>
  <RESULTMSG>API_OK</RESULTMSG>
  <DEVICES>
    <COUNT>1</COUNT>
    <DEVICE>
      <DEVICEID>1111</DEVICEID>
      <DEVICEALIAS>DESK1</DEVICEALIAS>
      <SYS_USER>gkerber</SYS_USER>
      <CRM_USER>CCGKERBER</CRM_USER>
      <GROUP>MANAGER</GROUP>
      <GATE>prize</GATE>
      <ANI></ANI>
      <DNIS></DNIS>
      <USER1>E</USER1>
      <USER2>winners</USER2>
      <USER3></USER3>
      <USER4></USER4>
      <USER5></USER5>
      <USER6></USER6>
      <USER7></USER7>
      <USER8></USER8>
      <USER9></USER9>
      <USER10></USER10>
      <USER11></USER11>
      <USER12></USER12>
      <USER13></USER13>
      <USER14></USER14>
      <USER15></USER15>
      <CALLDIRECTION>I</CALLDIRECTION>
      <ISTRUNK></ISTRUNK>
      <STATION></STATION>
      <STARTTIME>2/1/2011 11:49:32 AM</STARTTIME>
      <STOPTIME></STOPTIME>
      <COREIDENT>2</COREIDENT>
      <RECORDING>
        <ISRECORDING>Y</ISRECORDING>
        <ISRECORDINGVIDEO>Y</ISRECORDINGVIDEO>
        <FILENAME>C:\Recordings\20110131\DESK1\DESK1-17-03-14.wav</FILENAME>
        <CALLID></CALLID>
        <SESSIONID></SESSIONID>
        <CALLINSTANCE>2001</CALLINSTANCE>
      </RECORDING>
    </DEVICE>
  </DEVICES>
</RESULT>

```

DEVICESTATUS

Description: Queries the system for current information pertaining to a specific device or devices. The system prioritizes the call instances based on which one is active or was most recently active. If the device is not currently on a call, the last call it was on will be returned. This function returns ONLY the highest priority (most recently active) instance for a device. For all instances, see DEVICERECORDINGSTATUS.

Parameters:

- REQUESTID
- DEVICEID
- DEVICEALIAS
- CRM_USER
- SYS_USER

Returns: RESULT section plus an additional DEVICE section containing:

- DEVICEID
- DEVICEALIAS
- SYS_USER
- CRM_USER
- GROUP
- GATE
- ANI
- DNIS
- USER1 – USER15
- CALLDIRECTION
- ISTRUNK
- STATION
- STARTTIME
- STOPTIME
- COREIDENT
- RECORDING section:
 - ISRECORDING
 - ISRECORDINGVIDEO
 - FILENAME
 - CALLID
 - SESSIONID
 - CALLINSTANCE

Example:

```

<REQUEST>
  <TYPE>DEVICESTATUS</TYPE>
  <DEVICEALIAS>DESK1</DEVICEALIAS>
  <REQUESTID>24</REQUESTID>
</REQUEST>

<RESULT>

  <REQUESTTYPE>DEVICESTATUS</REQUESTTYPE>
  <REQUESTID>24</REQUESTID>
  <RESULTTYPE>API_OK</RESULTTYPE>
  <RESULTCODE>20</RESULTCODE>
  <RESULTMSG>Found the following matching devices</RESULTMSG>

<DEVICES>
  <COUNT>1</COUNT>
  <DEVICE>
    <DEVICEID>1111</DEVICEID>
    <DEVICEALIAS>DESK1</DEVICEALIAS>
    <SYS_USER>gkerber</SYS_USER>
    <CRM_USER>CCGKERBER</CRM_USER>
    <GROUP>MANAGER</GROUP>
    <GATE>prize</GATE>
    <ANI></ANI>
    <DNIS></DNIS>
    <USER1>E</USER1>
    <USER2>winners</USER2>
    <USER3></USER3>
    <USER4></USER4>
    <USER5></USER5>
    <USER6></USER6>
    <USER7></USER7>
    <USER8></USER8>
    <USER9></USER9>
    <USER10></USER10>
    <USER11></USER11>
    <USER12></USER12>
    <USER13></USER13>
    <USER14></USER14>
    <USER15></USER15>
    <CALLDIRECTION>I</CALLDIRECTION>
    <ISTRUNK></ISTRUNK>
    <STATION></STATION>
    <STARTTIME>2/1/2011 11:49:32 AM</STARTTIME>
    <STOPTIME></STOPTIME>
    <COREIDENT>2</COREIDENT>
    <RECORDING>
      <ISRECORDING>Y</ISRECORDING>
      <ISRECORDINGVIDEO>Y</ISRECORDINGVIDEO>
      <FILENAME>C:\Recordings\20110131\DESK1\DESK1-17-03-14.wav</FILENAME>
      <CALLID></CALLID>
      <SESSIONID></SESSIONID>
      <CALLINSTANCE>2001</CALLINSTANCE>
    </RECORDING>
  </DEVICE>
</DEVICES>
</RESULT>

```

DEVICERECORDINGSTATUS

Description: Queries the system for a list of all instances of a device and displays status (i.e., recording or recording pause).

Parameters:

- REQUESTID
- DEVICEID
- DEVICEALIAS
- CRM_USER
- SYS_USER

Returns: RESULT section plus an additional DEVICE section containing:

- DEVICEID
- DEVICEALIAS
- SYS_USER
- CRM_USER
- COREIDENT
- RECORDING section:
 - GROUP
 - GATE
 - ANI
 - DNIS
 - USER1 – USER15
 - CALLDIRECTION
 - ISTRUNK
 - STATION
 - STARTTIME
 - STOPTIME
 - ISRECORDING
 - ISRECORDINGVIDEO
 - FILENAME
 - CALLID
 - SESSIONID
 - CALLINSTANCE

Example:

```

<REQUEST>
  <TYPE>DEVICERECORDINGSTATUS</TYPE>
  <DEVICEALIAS>DESK1</DEVICEALIAS>
  <REQUESTID>24</REQUESTID>
</REQUEST>

<RESULT>
  <REQUESTTYPE>DEVICERECORDINGSTATUS</REQUESTTYPE>
  <REQUESTID>2</REQUESTID>
  <RESULTTYPE>API_OK</RESULTTYPE>
  <RESULTCODE>20</RESULTCODE>
  <RESULTMSG>Following active call instances found for specified deviceID,
devicealias, crm_user or sys_user</RESULTMSG>
  <DEVICE>
    <DEVICEID>7008</DEVICEID>
    <DEVICEALIAS></DEVICEALIAS>
    <SYS_USER>jane.doe</SYS_USER>
    <CRM_USER></CRM_USER>
    <COREIDENT>8</COREIDENT>
    <RECORDING>
      <GROUP></GROUP>
      <GATE></GATE>
      <ANI>7460</ANI>
      <DNIS>7008</DNIS>
      <USER1></USER1>
      <USER2></USER2>
      <USER3></USER3>
      <USER4></USER4>
      <USER5></USER5>
      <USER6>30</USER6>
      <USER7>1</USER7>
      <USER8>00001000371342197048</USER8>
      <USER9></USER9>
      <USER10></USER10>
      <USER11></USER11>
      <USER12></USER12>
      <USER13></USER13>
      <USER14></USER14>
      <USER15></USER15>
      <CALLDIRECTION>I</CALLDIRECTION>
      <ISTRUNK></ISTRUNK>
      <STATION></STATION>
      <STARTTIME>7/13/2012 12:30:43 PM</STARTTIME>
      <STOPTIME></STOPTIME>
      <ISRECORDING>Y</ISRECORDING>
      <ISRECORDINGVIDEO>N</ISRECORDINGVIDEO>
      <FILENAME>C:\Recordings\20120713\7008\7008-12-30-43.cca</FILENAME>
      <CALLID></CALLID>
      <SESSIONID></SESSIONID>
      <CALLINSTANCE>37</CALLINSTANCE>
      <STATUS>recordpaused</STATUS>
    </RECORDING>
  </DEVICE>
  <RECORDING>
    <GROUP></GROUP>
    <GATE></GATE>
    <ANI>7008</ANI>
    <DNIS>7007</DNIS>
    <USER1></USER1>
    <USER2></USER2>

```

```

<USER3></USER3>
<USER4></USER4>
<USER5></USER5>
<USER6></USER6>
<USER7></USER7>
<USER8>00001000381342197107</USER8>
<USER9></USER9>
<USER10></USER10>
<USER11></USER11>
<USER12></USER12>
<USER13></USER13>
<USER14></USER14>
<USER15></USER15>
<CALLDIRECTION>0</CALLDIRECTION>
<ISTRUNK></ISTRUNK>
<STATION></STATION>
<STARTTIME>7/13/2012 12:31:54 PM</STARTTIME>
<STOPTIME></STOPTIME>
<ISRECORDING>Y</ISRECORDING>
<ISRECORDINGVIDEO>N</ISRECORDINGVIDEO>
<FILENAME>C:\Recordings\20120713\7008\7008-12-31-54.cca</FILENAME>
<CALLID></CALLID>
<SESSIONID></SESSIONID>
<CALLINSTANCE>38</CALLINSTANCE>
<STATUS>recording</STATUS>
</RECORDING>
</DEVICE>
</RESULT>

```

SYSTEMSTATUS

Description: Queries the system for a system status. Information returned contains information pertaining to the health of the system, as well as, disk space, etc.

Parameters:

- REQUESTID

Returns: RESULT section plus additional information tags:

- RECORDINGPATH
- RECORDINGSPACEINFO
- RECORDINGTOTALDISKCAPACITY
- RECORDINGTOTALDISKFREE
- RECORDINGTOTALDISKFREEPCT
- SYSTEMUPTIME
- PROCESSOR#
 - SYSTEMPROCESSORSPEED
 - SYSTEMPROCESSORTYPE
- SYSTEMRAMTOTAL
- SYSTEMRAMFREE
- SYSTEMRAMUSED
- SYSTEMRAMUSEDPCT

Example:

```

<REQUEST>
  <TYPE>SYSTEMSTATUS</TYPE>
  <REQUESTID>255</REQUESTID>
</REQUEST>

<RESULT>
  <REQUESTTYPE>SYSTEMSTATUS</REQUESTTYPE>
  <REQUESTID>255</REQUESTID>
  <RESULTTYPE>API_OK</RESULTTYPE>
  <RESULTCODE>20</RESULTCODE>
  <RESULTMSG>API_OK</RESULTMSG>
  <RECORDINGPATH>C:\Recordings\<</RECORDINGPATH>
  <RECORDINGSPEACEINFO>223.66GB of 465.64GB</RECORDINGSPEACEINFO>
  <RECORDINGTOTALDISKCAPACITY>476819</RECORDINGTOTALDISKCAPACITY>
  <RECORDINGTOTALDISKFREE>229032</RECORDINGTOTALDISKFREE>
  <RECORDINGTOTALDISKFREEPCT>48.03</RECORDINGTOTALDISKFREEPCT>
  <SYSTEMUPTIME>0 days, 18 hours, 24 minutes, 37 seconds.</SYSTEMUPTIME>
<PROCESSOR0>
  <SYSTEMPROCESSORSPEED>2394MHz</SYSTEMPROCESSORSPEED>
  <SYSTEMPROCESSORTYPE>x86 Family 6 Model 15 Stepping 11</SYSTEMPROCESSORTYPE>
</PROCESSOR0>
<PROCESSOR1>
  <SYSTEMPROCESSORSPEED>2394MHz</SYSTEMPROCESSORSPEED>
  <SYSTEMPROCESSORTYPE>x86 Family 6 Model 15 Stepping 11</SYSTEMPROCESSORTYPE>
</PROCESSOR1>
<PROCESSOR2>
  <SYSTEMPROCESSORSPEED>2394MHz</SYSTEMPROCESSORSPEED>
  <SYSTEMPROCESSORTYPE>x86 Family 6 Model 15 Stepping 11</SYSTEMPROCESSORTYPE>
</PROCESSOR2>
<PROCESSOR3>
  <SYSTEMPROCESSORSPEED>2394MHz</SYSTEMPROCESSORSPEED>
  <SYSTEMPROCESSORTYPE>x86 Family 6 Model 15 Stepping 11</SYSTEMPROCESSORTYPE>
</PROCESSOR3>
  <SYSTEMRAMTOTAL>3325</SYSTEMRAMTOTAL>
  <SYSTEMRAMFREE>1702</SYSTEMRAMFREE>
  <SYSTEMRAMUSED>1623</SYSTEMRAMUSED>
  <SYSTEMRAMUSEDPCT>48</SYSTEMRAMUSEDPCT>
</RESULT>

```

CHANNELS

Description: Queries the system for status of recorded channels.

Parameters:

- REQUESTID

Returns:

- **API_DATABASE_QUERY_ERROR:** If the API doesn't successfully connect to the database.

A successful call returns a RESULT section with a COUNT of the number of channels, plus an additional CHANNEL section for each channel on the system containing:

- ID: This is the Channel ID from the recording database. The number of ID sections is the same as the COUNT.
- STATE
- PLAYBACKEXTENSION (no longer supported)
- RECORDINGDEVICEALIAS (no longer supported)
- RECORDINGDEVICE (no longer supported)
- LASTSTATECHANGE
- LASTSTATECHANGEUNIXTIME

Example:

```
<REQUEST>
<TYPE>CHANNELS</TYPE>
<REQUESTID>255</REQUESTID>
</REQUEST>

<RESULT>
<REQUESTTYPE>CHANNELS</REQUESTTYPE>
<REQUESTID>26</REQUESTID>
<RESULTTYPE>API_OK</RESULTTYPE>
<RESULTCODE>20</RESULTCODE>
<RESULTMSG>API_OK</RESULTMSG>
<COUNT>4</COUNT>
<CHANNELS>
<CHANNEL>
  <ID>1</ID>
  <STATE>PreparingToRecord</STATE>
  <PLAYBACKEXTENSION></PLAYBACKEXTENSION>
  <RECORDINGDEVICEALIAS></RECORDINGDEVICEALIAS>
  <RECORDINGDEVICE>7002</RECORDINGDEVICE>
  <LASTSTATECHANGE>1/31/2011 5:50:33 PM</LASTSTATECHANGE>
  <LASTSTATECHANGEUNIXTIME>1296496234</LASTSTATECHANGEUNIXTIME>
</CHANNEL>
<CHANNEL>
  <ID>2</ID>
  <STATE>Idle</STATE>
  <PLAYBACKEXTENSION></PLAYBACKEXTENSION>
  <RECORDINGDEVICEALIAS></RECORDINGDEVICEALIAS>
  <RECORDINGDEVICE>7003</RECORDINGDEVICE>
  <LASTSTATECHANGE>1/31/2011 6:15:52 PM</LASTSTATECHANGE>
  <LASTSTATECHANGEUNIXTIME>1296497752</LASTSTATECHANGEUNIXTIME>
</CHANNEL>
<CHANNEL>
  <ID>3</ID>
  <STATE>Idle</STATE>
  <PLAYBACKEXTENSION></PLAYBACKEXTENSION>
  <RECORDINGDEVICEALIAS></RECORDINGDEVICEALIAS>
  <RECORDINGDEVICE>7055</RECORDINGDEVICE>
  <LASTSTATECHANGE>1/31/2011 6:11:40 PM</LASTSTATECHANGE>
  <LASTSTATECHANGEUNIXTIME>1296497501</LASTSTATECHANGEUNIXTIME>
</CHANNEL>
<CHANNEL>
  <ID>4</ID>
  <STATE>Idle</STATE>
```

```
<PLAYBACKEXTENSION></PLAYBACKEXTENSION>
<RECORDINGDEVICEALIAS></RECORDINGDEVICEALIAS>
<RECORDINGDEVICE>7444</RECORDINGDEVICE>
<LASTSTATECHANGE>1/31/2011 6:11:40 PM</LASTSTATECHANGE>
<LASTSTATECHANGEUNIXTIME>1296497501</LASTSTATECHANGEUNIXTIME>
</CHANNEL>
</CHANNELS>
</RESULT>
```

STATIONS

Description: Queries the system for a list of programmed stations.

Parameters:

- REQUESTID

Returns:

- **API_DATABASE_QUERY_ERROR:** If the API doesn't successfully connect to the database.

A successful API call returns a RESULT section including a COUNT of the number of stations, plus an additional STATIONS section for each station on the system containing:

- STATIONNAME
- DEVICEID

Example:

```
<REQUEST>
<TYPE>STATIONS</TYPE>
<REQUESTID>29</REQUESTID>
</REQUEST>

<RESULT>
<REQUESTTYPE>STATIONS</REQUESTTYPE>
<REQUESTID>29</REQUESTID>
<RESULTTYPE>API_OK</RESULTTYPE>
<RESULTCODE>20</RESULTCODE>
<RESULTMSG>API_OK</RESULTMSG>
<COUNT>2</COUNT>
<STATIONS>
  <STATION>
    <STATIONNAME>BOBDABUILDER</STATIONNAME>
    <DEVICEID>2222</DEVICEID>
  </STATION>
  <STATION>
    <STATIONNAME>JamesBond</STATIONNAME>
    <DEVICEID>7007</DEVICEID>
  </STATION>
</STATIONS>
</RESULT>
```

FETCHTERMINOLOGY

Description: Queries the system for a list of terminology settings.

Parameters:

- REQUESTID

Returns: A RESULT section including a COUNT of the number of TERMINOLOGY sections, plus additional TERMINOLOGY sections for each terminology variable specified in the system:

- NAME
- VALUE

Example Request:

```
<REQUEST>
  <TYPE>FETCHTERMINOLOGY</TYPE>
  <REQUESTID>34</REQUESTID>
</REQUEST>
```

Example Result:

```
<RESULT>
  <REQUESTTYPE>FETCHTERMINOLOGY</REQUESTTYPE>
  <REQUESTID>34</REQUESTID>
  <COUNT>10</COUNT>
  <SETTINGS>
    <TERMINOLOGY>
      <NAME>agent</NAME>
      <VALUE>Agent</VALUE>
    </TERMINOLOGY>
    <TERMINOLOGY>
      <NAME>ani</NAME>
      <VALUE>CallerID ANI</VALUE>
    </TERMINOLOGY>
    <TERMINOLOGY>
      <NAME>callcopygroup</NAME>
      <VALUE>CallCopy group</VALUE>
    </TERMINOLOGY>
    <TERMINOLOGY>
      <NAME>devicealias</NAME>
      <VALUE>Agent Number</VALUE>
    </TERMINOLOGY>
    <TERMINOLOGY>
      <NAME>deviceid</NAME>
      <VALUE>Voice Port</VALUE>
    </TERMINOLOGY>
    <TERMINOLOGY>
      <NAME>dnis</NAME>
      <VALUE>Number Called DNIS</VALUE>
    </TERMINOLOGY>
    <TERMINOLOGY>
      <NAME>gate</NAME>
      <VALUE>ACD Gate</VALUE>
    </TERMINOLOGY>
    <TERMINOLOGY>
      <NAME>group</NAME>
      <VALUE>Group</VALUE>
    </TERMINOLOGY>
```

```
<NAME>user1</NAME>
<VALUE>Account Number</VALUE>
</TERMINOLOGY>
<TERMINOLOGY>
  <NAME>user2</NAME>
  <VALUE>CSN</VALUE>
</TERMINOLOGY>
</SETTINGS>
</RESULT>
```

CALLLIST

Description: Queries the system for a list of call recordings matching criteria.

Parameters:

- REQUESTID (required)
- DEVICEID
- CRM_USER
- SYS_USER
- DEVICEALIAS
- GROUP
- GATE
- ANI
- DNIS
- USER1 - USER15 **
- CALLCOUNT (number of calls that will be returned)
- CALLDATESTART (beginning date for filter, in UNIX time)
- CALLDATEEND (end date for filter, in UNIX time)

Filters are combined as a Boolean "AND" operation.

Note Depending on which parameters are passed, the number of different parameters passed, and the number of results that match the passed parameters, database performance may be impacted. While Uptivity's recording capability is designed to function normally during database outages, proper consideration must be taken when designing call list queries in order to prevent excessive use of database resources. As an additional note, if both CALLCOUNT and CALLDATESTART/END are queried at the same time, the expected behavior is that CALLCOUNT will limit the query to showing the top N calls within the selected date range.

Returns: RESULT section including all information for all recording records matching the query criteria.

Example Request

```
<REQUEST>
<TYPE>CALLLIST</TYPE>
<REQUESTID>1</REQUESTID>
<DEVICEID>1111</DEVICEID>
<USER3>12345</USER3>
<CALLCOUNT>5</CALLCOUNT>
<CALLDATESTART>1312156800</CALLDATESTART>
<CALLDATEEND>1312934400</CALLDATEEND>
</REQUEST>
```

Example Results

```
<RESULT>
<TYPE>CALLLIST</TYPE>
<REQUESTID>1</REQUESTID>
<SEARCHRESULT>
  <CALLNUMBER>1</CALLNUMBER>
  <DEVICEID>1111</DEVICEID>
  <DEVICEALIAS>1234</DEVICEALIAS>
  <ANI></ANI>
  <DNIS></DNIS>
  <CALLDIRECTION>I</CALLDIRECTION>
  <GROUP></GROUP>
  <GATE></GATE>
  <USER1></USER1>
  <USER2></USER2>
  <USER3>12345</USER3>
  <USER4></USER4>
  <USER5></USER5>
  <USER6></USER6>
  <USER7></USER7>
  <USER8></USER8>
  <USER9></USER9>
  <USER10></USER10>
  <USER11></USER11>
  <USER12></USER12>
  <USER13></USER13>
  <USER14></USER14>
  <USER15></USER15>
  <RECORDID>13101</RECORDID>
  <RECORDINGTIME>1312921123</RECORDINGTIME>
  <DURATION>60</DURATION>
  <AGENTFIRSTNAME>John</AGENTFIRSTNAME>
  <AGENTLASTNAME>Smith</AGENTLASTNAME>
  <CRM_USER></CRM_USER>
  <SYS_USER></SYS_USER>
  </SEARCHRESULT>
<SEARCHRESULT>
  <CALLNUMBER>2</CALLNUMBER>
  <DEVICEID>1111</DEVICEID>
  <DEVICEALIAS>1234</DEVICEALIAS>
  ...
  </SEARCHRESULT>
<SEARCHRESULT>
  <CALLNUMBER>3</CALLNUMBER>
  <DEVICEID>1111</DEVICEID>
  <DEVICEALIAS>1234</DEVICEALIAS>
  ...
  </SEARCHRESULT>
<SEARCHRESULT>
```

Status Functions

```
<CALLNUMBER>4</CALLNUMBER>
<DEVICEID>1111</DEVICEID>
<DEVICEALIAS>1234</DEVICEALIAS>
  ...
</SEARCHRESULT>
<SEARCHRESULT>
<CALLNUMBER>5</CALLNUMBER>
<DEVICEID>1111</DEVICEID>
<DEVICEALIAS>1234</DEVICEALIAS>
  ...
</SEARCHRESULT>
</RESULT>
```

Recording Control Functions

The recording control functions allow you to write software that controls when the system should record. The system allows you to start and stop recording at will.

Using these functions, you can create custom triggers in your software to start and stop recording. Potential applications include allowing agents to record harassing callers or recording the part of a call containing credit card verification.

These functions will not cause problems if the device is already being recorded, or is not being recorded. In other words, you do not need to first check the status of a device before sending this message.

CHATSTART

Description: Used to initiate a desktop-screen-capture-only recording session. The recorder assumes there is no audio with this call. This is commonly used with web-based chat applications. Separate instances of screen capture on the same system (for example, for separate chat windows/sessions) can be started and stopped by matching the SESSIONID with the CHATSTART and CHATSTOP commands in the requests sent. Bear in mind that performing more than three concurrent screen captures on a single system may result in reduced system performance.

Parameters:

- REQUESTID (required)
- SESSIONID (required)
- AGENTID

If AGENTID is not provided, Discover can look up the agent using KEYNAME and KEYVALUE.

- KEYNAME: USERNAME, SYS_USER, EMPLOYEEID, CRM_USER, DEVICEALIAS (Phone ID)
- KEYVALUE: The username or employee ID as dictated in KEYNAME.

Returns:

A standard result code is returned:

- **API_SESSIONID_UNSPECIFIED:** If the API doesn't successfully connect to the database.
- **API_AGENT_NOT_FOUND:** Returned if Discover cannot locate an agent based on the information provided; detail description will be in the RESULTMSG.
- **API_ERROR_RECORDER_NOT_RUNNING:** If the API could not send the command to any of the related Cores.
- **API_OK:** If the API was able to connect to a Core.

Example:

```

<REQUEST>
  <REQUESTID>37</REQUESTID>
  <TYPE>CHATSTART</TYPE>
  <SESSIONID>82738</SESSIONID>
  <KEYNAME>USERNAME</KEYNAME>
  <KEYVALUE>JDOE</KEYVALUE>
</REQUEST>

<RESULT>
  <REQUESTTYPE>CHATSTART</REQUESTTYPE>
  <REQUESTID>37</REQUESTID>
  <RESULTTYPE>API_OK</RESULTTYPE>
  <RESULTCODE>20</RESULTCODE>
  <RESULTMSG>CHATSTART sent to all of the following cores: 1</RESULTMSG>
</RESULT>

```

CHATSTOP

Description: Used to stop a desktop-screen-capture recording session. This information is used to update live displays, as well as to stop recording if the device is currently being recorded.

Parameters:

- REQUESTID (required)
- SESSIONID (required)

Returns:

A standard result code is returned:

- **API_SESSIONID_UNSPECIFIED:** If the API doesn't successfully connect to the database.
- **API_ERROR_RECORDER_NOT_RUNNING:** If the API could not send the command to any of the related Cores.
- **API_OK:** If the API was able to connect to the Core.

Example:

```

<REQUEST>
  <REQUESTID>52</REQUESTID>
  <TYPE>CHATSTOP</TYPE>
  <SESSIONID>82738</SESSIONID>
</REQUEST>

<RESULT>
  <REQUESTTYPE>CHATSTOP</REQUESTTYPE>
  <REQUESTID>46</REQUESTID>
  <RESULTTYPE>API_OK</RESULTTYPE>
  <RESULTCODE>20</RESULTCODE>
  <RESULTMSG>CHATSTOP sent to all of the following cores: 1</RESULTMSG>
</RESULT>

```


CHATUPDATE

Description: Used to update the record for a desktop-screen-capture recording session. This information is used to update live displays and reporting, but will not be used by the scheduling system because it is assumed that the recording is in progress at this point. Prior to this message, a CHATSTART message must be sent.

Parameters:

- REQUESTID (required)
- SESSIONID (required)
- DEVICEALIAS
- GROUP
- GATE
- ANI
- DNIS
- USER1-USER15 **
- CALLDIRECTION
- CALLID

Returns:

A standard result code is returned:

- **API_SESSIONID_UNSPECIFIED:** If the API doesn't successfully connect to the database
- **API_ERROR_RECORDER_NOT_RUNNING:** If the API could not send the command to any of the related Cores.
- **API_OK:** If the API was able to connect to Core.

Example:

```
<REQUEST>
  <REQUESTID>64</REQUESTID>
  <TYPE>CHATUPDATE</TYPE>
  <SESSIONID>82738</SESSIONID>
  <GROUP>53</GROUP>
</REQUEST>

<RESULT>
  <REQUESTTYPE>CHATUPDATE</REQUESTTYPE>
  <REQUESTID>64</REQUESTID>
  <RESULTTYPE>API_OK</RESULTTYPE>
  <RESULTCODE>20</RESULTCODE>
  <RESULTMSG>CHATUPDATE sent to all of the following cores: 1</RESULTMSG>
</RESULT>
```

BLACKOUTSTART/AGENTBLACKOUTSTART

Description: Used to start a blackout period for a recording. Only specify one of the following: DEVICEID, DEVICEALIAS, CRM_USER, or SYS_USER. The blackout begins based on when the message is received plus any TIMEOFFSET.

While BLACKOUT is based on call instance, AGENTBLACKOUT will blackout all call and screen data for a specific time range for the specified agent. AGENTBLACKOUT is preferred over BLACKOUT, and AGENTBLACKOUT is enabled by default in the cc_APIServer.ini (configured during installation). Refer to the "API Server" section in the *Discover Installation Guide* for more information.

Parameters:

- REQUESTID
- DEVICEID
- DEVICEALIAS
- CRM_USER
- SYS_USER
- TIMEOFFSET
- CALLINSTANCE (this parameter is only used for BLACKOUT, not AGENTBLACKOUT)

Returns: Standard result code.

Example:

```
<REQUEST>
  <REQUESTID>124</REQUESTID>
  <TYPE>BLACKOUTSTART</TYPE>
  <SYS_USER>JSMITH</SYS_USER>

  <TIMEOFFSET>-5</TIMEOFFSET>
</REQUEST>

<RESULT>
  <REQUESTTYPE>BLACKOUTSTART</REQUESTTYPE>
  <REQUESTID>124</REQUESTID>
  <RESULTTYPE>API_OK</RESULTTYPE>
  <RESULTCODE>20</RESULTCODE>
  <RESULTMSG>BLACKOUTSTART sent to all of the following cores: 1</RESULTMSG>
</RESULT>
```

Errors: Possible error returns are:

- **API_AGENT_NOT_FOUND:** Request needs to find information for either the device or the agent. If neither is found, this error appears.
- **API_DEVICE_INVALID:** Could not find a valid device from the given parameters.
- **API_ERROR_RECORDER_NOT_RUNNING:** If the API could not send the command to any of the related Cores.
- **API_OK:** If the API was able to connect to some Cores but not others, the RESULTMSG will be 'BLACKOUTSTART could not be sent to the following cores: #,#,#'
- **API_REQUESTID_INVALID:** REQUESTID specified is not valid.

BLACKOUTSTOP/AGENTBLACKOUTSTOP

Description: Used to stop a blackout period for a recording. Only specify one of the following: DEVICEID, DEVICEALIAS, CRM_USER, or SYS_USER. Based on when the message is received and time offset is when the blackout will stop.

While BLACKOUT is based on call instance, AGENTBLACKOUT will blackout all call and screen data for a specific time range for the specified agent. AGENTBLACKOUT is preferred over BLACKOUT, and AGENTBLACKOUT is enabled by default in the cc_APIServer.ini (configured during installation). Refer to the "API Server" section in the *Discover Installation Guide* for more information.

Parameters:

- REQUESTID (required)
- DEVICEID
- DEVICEALIAS
- CRM_USER
- SYS_USER
- TIMEOFFSET
- CALLINSTANCE (this parameter is only used for BLACKOUT, not AGENTBLACKOUT)

Returns: Standard result code.

Example:

```
<REQUEST>
  <REQUESTID>125</REQUESTID>
  <TYPE>BLACKOUTSTOP</TYPE>
  <SYS_USER>JSMITH</SYS_USER>
</REQUEST>
```

Errors: Possible error returns are:

- **API_AGENT_NOT_FOUND:** Request needs to find information for either the device or the agent. If neither is found, this error appears.
- **API_DEVICE_INVALID:** Could not find a valid device from the given parameters.
- **API_ERROR_RECORDER_NOT_RUNNING:** If the API could not send the command to any of the related Cores.
- **API_OK:** If the API was able to connect to some Cores but not others the RESULTMSG will be 'BLACKOUTSTART could not be sent to the following cores: #,#,#'
- **API_REQUESTID_INVALID:** Request id specified is not valid.

Notes

- When a Time Offset causes a BLACKOUTSTOP to be issued before the start it will result in the start and stop times being the same. For example: if a BLACKOUTSTOP is sent with a time offset of -60 and the blackout started only 30 seconds ago the BLACKOUTSTOP time will be the same as the BLACKOUTSTART time.
- CALLINSTANCE is used to distinguish which call the blackouts are issued to. If no CALLINSTANCE is provided on BLACKOUTSTART or BLACKOUTSTOP, then the CALLINSTANCE of the last call on the device is used.

Import Functions

The import functions allow you to write integration links between your systems and the Discover system. Potential applications include writing your own front-end interface to edit certain information contained within Discover, or writing automated scripts that update information in the server.

IMPORTUSER

Description: This function allows you to import users and add, modify and delete information pertaining to a user. Once a user is added, you may use IMPORTAGENTPHONE to associate phone IDs to the user. This command requires a password to import user account information. USERNAME is the Discover username, while CRM_USER is the corresponding username associated with the user in an integrated system.

Parameters:

- REQUESTID
- ACTION (Add, Delete, Modify, List)
- AGENT_ID
- EMPLOYEEID
- FIRSTNAME
- LASTNAME
- STATUS (A – Active, I – Inactive)
- ADD_TIME (Date/time offset)
- MOD_TIME (Date/time offset)
- SYS_USER
- DOMAIN
- EMAIL
- CRM_USER
- PASSWORD
- SITEID
- USERNAME

Returns:

- Standard Result
- AGENTID

Example:

```

<REQUEST>
  <TYPE>IMPORTUSER</TYPE>
  <REQUESTID>2</REQUESTID>
  <ACTION>ADD</ACTION>
  <AGENT_ID>2</AGENT_ID>
  <EMPLOYEEID>5</EMPLOYEEID>
  <FIRSTNAME>James</FIRSTNAME>
  <LASTNAME>Doe</LASTNAME>
  <STATUS>A</STATUS>
  <ADD_TIME></ADD_TIME>
  <MOD_TIME></MOD_TIME>
  <SYS_USER>doe.1</SYS_USER>
  <DOMAIN>somecompany</DOMAIN>
  <EMAIL>jdoe@somecompany.com</EMAIL>
  <CRM_USER>CRMUsername</CRM_USER>
  <PASSWORD>Password</PASSWORD>
  <SITEID>1</SITEID>
  <USERNAME>CallCopyUsername</USERNAME>
</REQUEST>

```

List Example:

```

<REQUEST>
  <TYPE>IMPORTUSER</TYPE>
  <REQUESTID>5</REQUESTID>
  <ACTION>LIST</ACTION>
</REQUEST>

<RESULT>
  <REQUESTTYPE>IMPORTUSER</REQUESTTYPE>
  <REQUESTID>5</REQUESTID>
  <RESULTTYPE>API_OK</RESULTTYPE>
  <RESULTCODE>20</RESULTCODE>
  <RESULTMSG>API_OK</RESULTMSG>
  <AGENTS>
    <COUNT>1</COUNT>
    <AGENT>
      <AGENT_ID>2</AGENT_ID>
      <EMPLOYEEID>5</EMPLOYEEID>
      <FIRSTNAME>John</FIRSTNAME>
      <LASTNAME>Doe</LASTNAME>
      <STATUS>A</STATUS>
      <ADD_TIME>10/30/2006 4:05:38 PM</ADD_TIME>
      <MOD_TIME>3/27/2008 3:34:43 PM</MOD_TIME>
      <SYS_USER>jdoe</SYS_USER>
      <DOMAIN>Uptivity</DOMAIN>
      <EMAIL>jdoe@uptivity.com</EMAIL>
      <CRM_USER>john</CRM_USER>
      <PHONES>1123,3343,3234</PHONES>
    </AGENT>
  </AGENTS>
</RESULT>

```

The possible values for ACTION are: ADD, DELETE, MODIFY, and LIST.

The field AGENTID is ignored when the action is ADD.

Import Functions

Deleting an agent will simply change the status flag of the agent to "deleted" and frees all phone ID associations with that agent. The actual record will not be removed. This ensures that past records will still identify the correct agent in case a phone ID is reused for a new agent.

MODIFY should only be used to add additional information to the agent, or to change the name of the agent as long as it is still the same employee.

An error will be returned if the AGENTID does not exist, or if you try to add a new agent with the same first and last name as an existing agent. Even though an error is returned when you try to add an agent with the same first and last name as an existing agent, values are not changes. Thus, you can write an automated script that continuously calls ADD and ignore errors.

LIST should be used to get a list of all agents currently in Discover. No additional parameters are needed. Returned are AGENT_ID, EMPLOYEE_ID, FIRST_NAME, LAST_NAME, STATUS, ADD_TIME, MOD_TIME, SYS_USER, EMAIL, CRM_USER, and PHONES.

Errors: Possible error returns are:

- **API_DATABASE_QUERY_ERROR:** Represents a range of possible query problems. Check the API logs for details.
- **API_ERROR_INVALID_ACTION:** Allowed actions are ADD, MODIFY, DELETE. If the requested action is not one of these, this error is returned.
- **API_INVALID_MESSAGE_FORMAT:** This message appears if parameters are missing or the request is not formatted correctly.
- **API_USER_ALREADY_EXIST:** Indicates that a user with the same username already exists.
- **API_USER_NOT_FOUND:** When modifying or deleting an agent, this may appear if the agent is not found. If it appears as the result of a query error, check the API logs for details.

IMPORTAGENTPHONE

Description: Allows a user to control the association of a phone device to an agent

Parameters:

- REQUESTID
- ACTION
- PHONEID
- AGENTID
- FIRSTNAME
- LASTNAME

Returns:

- Standard Result
- AGENTID

Example:

```
<REQUEST>
  <TYPE>IMPORTAGENTPHONE</TYPE>
  <REQUESTID>2</REQUESTID>
  <ACTION>ADD</ACTION>
  <PHONEID>1234</PHONEID>
  <AGENTID>0</AGENTID>
  <FIRSTNAME>John</FIRSTNAME>
  <LASTNAME>Doe</LASTNAME>
</REQUEST>
```

The possible values for action are: ADD and DELETE.

You must pass either the AGENTID or the FIRSTNAME and LASTNAME of the agent. The system will first try to use the AGENTID. Passing all three parameters will not cause a problem; however, in this case FIRSTNAME and LASTNAME will be ignored.

Deleting a PHONEID will have no effect on the agent record itself.

Deleting a PHONEID will not remove the call records for that PHONEID.

An error will be returned if the AGENTID does not exist, or if you try to add a new phone ID that is already assigned to another agent.

Errors: Possible error returns are:

- **API_AGENT_NOT_FOUND:** Request needs to find information for either the device or the agent. If neither is found, this error appears.

IMPORTWORKSTATION

Description: Allows an administrator to add or delete/add station-to-device mappings. An asterisk (*) denotes a required parameter.

Parameters:

- REQUESTID*
- DEVICEID*
- STATIONNAME*
- LOCATIONID*: the unique Location ID from the database.

Returns:

- Standard Result
- DEVICEID
- STATIONNAME

Example:

```
<REQUEST>
  <TYPE>IMPORTWORKSTATION</TYPE>
  <REQUESTID>2</REQUESTID>
  <DEVICEID>1234</DEVICEID>
  <STATIONNAME>COMPUTER1</STATIONNAME>
  <LOCATIONID>1</LOCATIONID>
</REQUEST>
```

Before the new information is added, a delete will be done for entries containing either the DEVICEID or STATIONNAME to guarantee that the new entry is unique.

The result will contain the STATIONNAME that was sent from the request; however the DEVICEID that is returned is the value that is actually stored in the database. If an error occurs adding the new entry, the result DEVICEID may be an old value. This design allows for easier troubleshooting.

Errors: Possible error returns are:

- **API_DATABASE_QUERY_ERROR:** Represents a range of possible query problems. Check the API logs for details.
- **API_INVALID_MESSAGE_FORMAT:** This message appears if parameters are missing or the request is not formatted correctly.

User, Group, and Role Functions

These functions allow you to control Discover users, groups, and roles from an external resource.

ADDGROUP

Description: Allows an administrator to add a Discover group. An asterisk (*) denotes a required parameter.

Parameters:

- REQUESTID
- GROUPNAME*

Returns:

- Standard Result
- GROUPID
- GROUPNAME

Example:

```
<REQUEST>
  <TYPE>ADDGROUP</TYPE>
  <REQUESTID>2</REQUESTID>
  <GROUPNAME>Sales & Marketing</GROUPNAME>
</REQUEST>

<RESULT>
  <REQUESTTYPE>ADDGROUP</REQUESTTYPE>
  <REQUESTID>2</REQUESTID>
  <RESULTTYPE>API_OK</RESULTTYPE>
  <RESULTCODE>20</RESULTCODE>
  <RESULTMSG>group: Sales & Marketing has been added</RESULTMSG>
  <GROUPID>11</GROUPID>
  <GROUPNAME>Sales & Marketing</GROUPNAME>
</RESULT>
```

Discover will attempt to add the new group. The GROUPNAME and the GROUPID of the new group will be returned as the result. If a group with the same name already exists, the function will still return as normal without modifying any data.

Errors: Possible error returns are:

- **API_INVALID_MESSAGE_FORMAT:** This message appears if parameters are missing or the request is not formatted correctly.

MODIFYGROUPPERMISSION

Description: Allows an administrator to add or remove agents and their device assignments to/from Discover groups.

Parameters:

- REQUESTID
- ACTION
- GROUPNAME
- GROUPLD
- PHONEID OR DEVICEID
- FIRSTNAME
- LASTNAME
- AGENTID

Returns:

- Standard Result
- Parameters Sent

Example:

```
<REQUEST>
  <TYPE>MODIFYGROUPPERMISSION</TYPE>
  <REQUESTID>2</REQUESTID>
  <ACTION>ADD</ACTION>
  <GROUPNAME>Sales & Marketing</GROUPNAME>
  <FIRSTNAME>John</FIRSTNAME>
  <LASTNAME>Doe</LASTNAME>
  <DEVICEID>1234</DEVICEID>
</REQUEST>
```

You must supply either ADD or DELETE as the ACTION type.

You must supply either GROUPNAME or GROUPLD, but you do not have to supply both.

You must supply either FIRSTNAME and LASTNAME, or AGENTID, but you do not have to supply both.

The system will first look to see if you supplied the textual representation of the group name or the agent name and lookup the corresponding IDs for you. In either case the ID is then queried to verify that the correct group and agent entries are found.

The DEVICEID can be a PHONEID that is assigned to the agent.

The result will include all data including the GROUPLD and AGENTID if you did not pass them to the function.

Errors: Possible error returns are:

- **API_AGENT_NOT_FOUND:** Request needs to find information for either the device or the agent. If neither is found, this error appears.
- **API_DATABASE_QUERY_ERROR:** Represents a range of possible query problems. Check the API logs for details.

MODIFYUSERGROUPPERMISSION

Description: Allows an administrator to add or remove permissions for users to view a Discover group and manage data (e.g., call records, evaluations) related to agents in that group.

Parameters:

- REQUESTID
- ACTION
- GROUPNAME
- GROUPID
- DEVICEID
- USERNAME

Returns:

- Standard Result
- Parameters Sent

Example:

```
<REQUEST>
  <TYPE>MODIFYUSERGROUPPERMISSION</TYPE>
  <REQUESTID>2</REQUESTID>
  <ACTION>ADD</ACTION>
  <GROUPNAME>Sales & Marketing</GROUPNAME>
  <USERNAME>qasupervisor</USERNAME>
</REQUEST>
```

You must supply either ADD or DELETE as the ACTION type.

You must supply either GROUPNAME or GROUPID, but you do not have to supply both.

The system will first look to see if you supplied the textual representation of the group name and look up the corresponding ID for you. In either case GROUPID and USERNAME are then queried to verify that the correct entries exist.

Errors: Possible error returns are:

- **API_DATABASE_QUERY_ERROR:** Represents a range of possible query problems. Check the API logs for details.
- **API_ERROR_INVALID_ACTION:** Allowed actions are ADD, MODIFY, DELETE. If the requested action is not one of these, this error will be displayed.
- **API_USER_NOT_FOUND:** When modifying or deleting an agent, this may appear if the agent is not found. If it appears as the result of a query error, check the API logs for details.

MODIFYROLE

Description: Allows an administrator to add a Discover Role.

Parameters:

- REQUESTID
- ACTION (add/modify/delete)
- ROLENAME
- DESCRIPTION

Returns:

- Standard Result
- Parameters Sent

Example:

```
<REQUEST>
  <REQUESTTYPE>MODIFYROLE</REQUESTTYPE>
  <REQUESTID>1</REQUESTID>
  <ACTION>ADD</ACTION>
  <ROLENAME>DefaultRole</ROLENAME>
  <DESCRIPTION>Adding Default Role</DESCRIPTION>
</REQUEST>

<RESULT>
  <REQUESTTYPE>MODIFYROLE</REQUESTTYPE>
  <REQUESTID>45</REQUESTID>
  <RESULTTYPE>API_OK</RESULTTYPE>
  <RESULTCODE>20</RESULTCODE>
  <RESULTMSG>Role Added</RESULTMSG>
</RESULT>
```

You must supply either ADD, MODIFY, or DELETE as the ACTION type.

You must supply REQUESTID.

Discover will attempt to add the new role. ROLENAME and RESULTCODE will be returned as the result. If a role with the same name already exists, the function will return as such without modifying any data.

Errors: Possible error returns are:

- **API_DATABASE_QUERY_ERROR:** Represents a range of possible query problems. Check the API logs for details.
- **API_ERROR_INVALID_ACTION:** Allowed actions are ADD, MODIFY, DELETE. If the requested action is not one of these, this error will be displayed.
- **API_INVALID_MESSAGE_FORMAT:** This message appears if parameters are missing or the request is not formatted correctly.
- **API_ROLE_ALREADY_EXISTS:** The role the request is attempting to create already exists.
- **API_ROLE_NOT_FOUND:** The requested role does not exist or could not be located.

MODIFYROLEGROUPPERMISSION

Description: Used to assign a Discover Group to a Role.

Parameters:

- REQUESTID
- ROLEID
- ROLENAME
- GROUPNAME
- ACTION (add/delete)

Returns:

- Standard Result
- Parameters Sent

Example:

```
<REQUEST>
  <REQUESTTYPE> MODIFYROLEGROUPPERMISSION </REQUESTTYPE>
  <REQUESTID>1</REQUESTID>
  <ACTION>ADD</ACTION>
  <ROLENAME>DefaultRole</ROLENAME>
  <GROUPNAME>CALLCOPYTESTGROUP</GROUPNAME>
</REQUEST>

<RESULT>
  <REQUESTTYPE>MODIFYROLEGROUPPERMISSION</REQUESTTYPE>
  <REQUESTID>1</REQUESTID>
  <RESULTTYPE>API_OK</RESULTTYPE>
  <RESULTCODE>20</RESULTCODE>
  <RESULTMSG>Group Group01 does not exist or it is not active</RESULTMSG>
</RESULT>
```

You must supply either ADD or DELETE as the ACTION type.

You must supply either ROLEID or ROLENAME, but you do not have to supply both.

You must supply REQUESTID and GROUPNAME.

Errors: Possible error returns are:

- **API_DATABASE_QUERY_ERROR:** Represents a range of possible query problems. Check the API logs for details.
- **API_ERROR_INVALID_ACTION:** Allowed actions are ADD, MODIFY, DELETE. If the requested action is not one of these, this error will be displayed.
- **API_INVALID_MESSAGE_FORMAT:** This message appears if parameters are missing or the request is not formatted correctly.

MODIFYUSERROLE

Description: Used to assign a Role to a User. Any of the following can be used to associate user info: USERID, LASTNAME, FIRSTNAME, SYSTEMUSERNAME, OR USERNAME.

Parameters:

- REQUESTID
- ROLEID
- ROLENAME
- USERID
- LASTNAME
- FIRSTNAME
- SYSTEMUSERNAME
- USERNAME
- ACTION (add/delete)

Returns:

- Standard Result
- Parameters Sent

Example:

```
<REQUEST>
  <REQUESTTYPE> MODIFYUSERROLE </REQUESTTYPE>
  <REQUESTID>1</REQUESTID>
  <ACTION>ADD</ACTION>
  <ROLENAME>DefaultRole</ROLENAME>
  <USERNAME>TestUser</USERNAME>
</REQUEST>

<RESULT>
  <REQUESTTYPE>MODIFYUSERROLE</REQUESTTYPE>
  <REQUESTID>1</REQUESTID>
  <RESULTTYPE>API_OK</RESULTTYPE>
  <RESULTCODE>20</RESULTCODE>
  <RESULTMSG>User 10 is assigned role Test</RESULTMSG>
</RESULT>
```

You must supply either ROLEID or ROLENAME, but you do not have to supply both.

Errors: Possible error returns are:

- **API_DATABASE_QUERY_ERROR:** Represents a range of possible query problems. Check API logs for details.
- **API_ERROR_INVALID_ACTION:** Allowed actions are ADD, MODIFY, DELETE. If the requested action is not one of these, this error will be displayed.
- **API_INVALID_MESSAGE_FORMAT:** This message appears if parameters are missing or the request is not formatted correctly.
- **API_ROLE_NOT_FOUND:** The requested role does not exist or could not be located.
- **API_USER_NOT_FOUND:** When modifying or deleting an agent, this message indicates that the agent could not be found. If it appears as the result of a query error, check the API logs for details.

EMAIL

Description: Prompts Discover to export the audio recording to the email address provided.

Parameters:

- REQUESTID
- UNIQUEFIELD
- UNIQUEID
- TOADDRESS
- MEDIA_FORMAT (MP3, WAV, VOX, M4A, or CAV)
- ENCRYPT (Used to encrypt the exported CAV file, requires PASSWORD)
- PASSWORD (Password used to access the encrypted exported CAV)

Returns:

- Standard Result

Example:

```
<REQUEST>
<TYPE>EMAIL</TYPE>
<REQUESTID>14</REQUESTID>
<TOADDRESS>jdoe@uptivity.com</TOADDRESS>
<MEDIA_FORMAT>wav</MEDIA_FORMAT>
<UNIQUEID>46</UNIQUEID>
<UNIQUEFIELD>ident</UNIQUEFIELD>
<ENCRYPT>Y</ENCRYPT>
<PASSWORD>test</PASSWORD>
</REQUEST>

<RESULT>
<REQUESTTYPE>EMAIL</REQUESTTYPE>
<REQUESTID>14</REQUESTID>
<RESULTTYPE>API_OK</RESULTTYPE>
<RESULTCODE>20</RESULTCODE>
<RESULTMSG>API_OK</RESULTMSG>
</RESULT>
```

Errors: Possible error returns are:

- **API_EMAIL_NOT_VALID:** The email address in the request is incorrect or could not be found.
- **API_ERROR_CLIENT_NOT_FOUND:** The email server is not configured or cannot be found.
- **API_FILE_NOT_FOUND:** The specific file to be exported and emailed cannot be found.
- **API_INVALID_MESSAGE_FORMAT:** Appears if parameters are missing or the request is not formatted correctly.

COMBINEDEMAIL

Description: Prompts Discover to export one or more recording files as a single file to the email address provided.

Parameters:

- REQUESTID
- TOADDRESS
- TONAME
- FROMADDRESS
- FROMNAME
- IDENT (Recording ID; Multiple IDs can be separated by a comma)
- UNIQUEID

Returns:

- Standard Result

Example:

```
<REQUEST>
<TYPE>COMBINEDEMAIL</TYPE>
<REQUESTID>1</REQUESTID>
<TOADDRESS>jane.doe@uptivity.com</TOADDRESS>
<TONAME>jane</TONAME>
<FROMADDRESS>jane.doe@uptivity.com</FROMADDRESS>
<FROMNAME>jane</FROMNAME>
<IDENT>1509</IDENT>
<UNIQUEID>IDENT</UNIQUEID>
</REQUEST>

<RESULT>
<REQUESTTYPE>COMBINEDEMAIL</REQUESTTYPE>
<REQUESTID>1</REQUESTID>
<RESULTTYPE>API_OK</RESULTTYPE>
<RESULTCODE>20</RESULTCODE>
<RESULTMSG>API_OK</RESULTMSG>
</RESULT>
```

Errors: Possible error returns are:

- **API_EMAIL_NOT_VALID:** The email address in the request is incorrect or could not be found.
- **API_ERROR_CLIENT_NOT_FOUND:** The email server is not configured or cannot be found.
- **API_FILE_NOT_FOUND:** A specific file to be exported and emailed cannot be found.
- **API_INVALID_MESSAGE_FORMAT:** Appears if parameters are missing or the request is not formatted correctly.

AGENTWINDOW

Description: Provides latest information on the agent's window as captured by Uptivity Screen Recording.

Parameters:

- REQUESTID
- COMPUTERNAME or
- USERNAME

Returns:

- Standard Result
- With screen information
 - Domain
 - IPADDRESS
 - STATUS
 - APPLICATIONTITLE
 - LASTUPDATE

Example:

```
<REQUEST>
<TYPE>AGENTWINDOW</TYPE>
<REQUESTID>7</REQUESTID>
<COMPUTERNAME>ceddy</COMPUTERNAME>
<USERNAME>ceddy</USERNAME>
</REQUEST>

<RESULT>
<REQUESTTYPE>AGENTWINDOW</REQUESTTYPE>
<REQUESTID>7</REQUESTID>
<RESULTTYPE>API_OK</RESULTTYPE>
<RESULTCODE>20</RESULTCODE>
<RESULTMSG>API_OK</RESULTMSG>
<DOMAIN>uptivity.com</DOMAIN>
<IPADDRESS>10.100.5.91</IPADDRESS>
<STATUS>AVAILABLE</STATUS>
<APPLICATIONTITLE>Internet Explorer</APPLICATIONTITLE>
<LASTUPDATE>Feb 2 2011 4:53PM</LASTUPDATE>
</RESULT>
```

Errors: Possible error returns are:

- **API_AGENT_NOT_FOUND:** Request needs to find information for either the device or the agent. If neither is found, this error appears.
- **API_DATABASE_QUERY_ERROR:** Represents a range of possible query problems. Check the API logs for details.

Results

All messages reply with a minimum of a root tag called RESULT. This tag contains the REQUESTID that was sent, as well as a RESULTTYPE, RESULTCODE and a RESULTMSG.

```
<RESULT>
  <REQUESTID>1</REQUESTID>
  <RESULTTYPE>API_OK</RESULTTYPE>
  <RESULTCODE>20</RESULTCODE>
  <RESULTMSG>API_OK</RESULTMSG>
</RESULT>
```

If the result is an error condition, the RESULTTYPE will be ERROR, the RESULTCODE will contain a code for the error, and the RESULTMSG may contain more detail about the error.

```
<RESULT>
  <REQUESTID>1</REQUESTID>
  <RESULTTYPE>ERROR</RESULTTYPE>
  <RESULTCODE>17</RESULTCODE>
  <RESULTMSG> API_ERROR_NO_DEFAULT_RECORDING_PATH</RESULTMSG>
</RESULT>
```

If the result is a non-error condition, the RESULT node will also contain a sub node containing data specific to the request that was made.

Result Codes/Result Types

Following are the RESULTCODE return values (i.e., numbers) and the corresponding RESULTTYPE label.

0	API_RECORDING_STARTED
1	API_ERROR_ALREADY_RECORDING
2	API_ERROR_OUT_OF_DISK_SPACE
3	API_ERROR_NO_FREE_CHANNELS
4	API_ERROR_UNKNOWN
5	API_DEVICE_ALIAS_UNSPECIFIED
6	API_ERROR_SCHEDULER_NOT_RUNNING
7	API_DEVICE_NOT_IN_CALL
8	API_DEVICE_INVALID
9	API_DID_NOT_MATCH_A_SCHEDULE
10	API_UNKNOWN_MESSAGE_TYPE
11	API_ERROR_PROCESSING_MESSAGE
12	API_DEVICE_NOT_RECORDING
13	API_RECORDING_STOPPED
14	API_REQUESTID_INVALID
15	API_INVALID_REQUEST_TYPE
16	API_INVALID_MESSAGE_FORMAT
17	API_INVALID_MESSAGE_FORMAT
18	API_ERROR_NO_DEFAULT_RECORDING_PATH
20	API_OK
21	API_ERROR_INVALID_ACTION
22	API_ERROR_KEYS_NOT_UNIQUE
23	API_DATABASE_QUERY_ERROR
24	API_AGENT_NOT_FOUND
25	API_AGENT_NOT_ACTIVE
26	API_BLANK_REQUIRED_VALUE
27	API_NO_GROUP
28	API_USER_NOT_FOUND
29	API_MODE_INVALID
30	API_EVENT_TYPE_INVALID
31	API_ERROR_CLIENT_NOT_FOUND
32	API_ERROR_ALREADY_MONITORING
33	API_SESSIONID_UNSPECIFIED
34	API_ERROR_RECORDER_NOT_RUNNING
35	API_ERROR_BLOCKED_RECORDING_FILTER
36	API_ERROR_LOGGER_NOT_RUNNING
37	API_RECORDING_UPDATED
38	API_BLACKOUT_INVALID_STATE
39	API_UNLICENSED
40	API_RECORDID_INVALID

41	API_FILE_NOT_FOUND
42	API_AGENT_ALREADY_EXIST
43	API_STREAMING_STARTED
44	API_COMMAND_NOT_ALLOWED
45	API_EMAIL_NOT_VALID
46	API_PARTIAL_CORE_RESPONSE
47	API_COMMAND_QUEUE_FULL
48	API_TOO_MANY_CLIENTS
49	API_COMMAND_NOT_SUPPORTED
50	API_ROLE_ALREADY_EXISTS
51	API_PERMISSIONIDENT_NOT_FOUND
52	API_ROLE_NOT_FOUND
53	API_SITEID_NOT_VALID
54	API_USER_ALREADY_EXIST
55	API_CONFIG_ERROR

Parameter Definitions

ALLOWSELFRECORD: Permission given to an agent allowing them to record their own calls. Possible values (Y/ [N])

ALLOWSELFDOWNLOAD: Permission given to an agent allowing them to download their recorded. Possible values (Y/ [N])

ACTION: Action associated with the request type. See the individual notes for the request type.

AGENTID: The identifier assigned to an agent by Discover. This ID is the internal system identifier used by Discover to associate agents to phone IDs, calls, etc.

AGENTINITIATED: 'Y' or 'N' value that indicates if a recording was initiated by the agent.

ANI: (Automatic Number Identification). The number of the person calling the device (Caller ID).

ARCHIVEACTION: An archive action in Discover that specifies how long call recording files are maintained. The archive action ID number must be used.

CALLCOUNT: Number of calls that a user requests when using the CALLLIST function.

CALLDIRECTION: Denotes whether the call was inbound or outbound (I / O)

CALLID: The call identifier that originally comes from the PBX.

CALLINSTANCE: Each call on a phone is considered an instance. For example, an agent is on a call with a customer. The agent puts the customer on hold to call a supervisor for assistance. The phone has two call instances.

COREIDENT: ID of the Discover Core used to record a call. This value is found in the Discover Web Portal.

COUNT: Number of items for a particular function such as number of channels. Varies by function.

CRM_USER: Name of the user in the customer's Customer Relationship Management system.

CTIINITIATED: 'Y' or 'N' value that indicates if a recording was initiated by a CTI event. Calls can also be initiated by API calls using the On-Demand module in Discover or by other applications.

DEVICEID: The physical number identifying a phone. This is usually the phone extension. In a free seating environment, this is the voice port or the DN of the phone. In other words, this is the fixed number identifying a device.

DEVICEALIAS: The logical number identifying a phone. In a free seating environment, this is usually the sign on number for the agent. This number is the variable number for a phone.

DNIS: (Dialed Number Identification Service). Typically the number the caller dialed to reach the device that took the call. This can also be a code that the carrier assigns to the call to identify it as it comes in over the circuits.

DOMAIN: The Active Directory domain of a user's Windows network account.

EMAIL: An email account address.

EMPLOYEEID: An optional employee ID that you can assign to an agent. This value is used for reporting only and is not used internally by Discover.

FILENAME: Path name of a call recording file.

FIRSTNAME: First name (or given name) of an agent.

GATE: An identifier for the call type as identified in the PBX. This is also known as the skill set, vector, or application.

GROUP: The ACD group to which a device belongs.

GROUPID: Discover Group ID number.

GROUPNAME: Discover Group name.

ID: Channel ID number in the Discover Web Portal.

IDENT: Discover recording ID number.

ISRECORDING: Value that indicates if a device is recording.

ISTRUNK: Value that indicates if the recording device is a trunk.

KEEPDAYS: The number of days to store a record and associated files before purging.

KEYNAME: See CHATSTART.

KEYVALUE: See CHATSTART.

LASTNAME: Last name (surname or family name) of an agent.

LASTSTATECHANGE: Date and time that a device's state changed (e.g., from 'Recording' to 'Available').

LASTSTATECHANGEUNIXTIME: Date and time that a device's state changed in the UNIX date/time format.

LOCATIONID: Unique identification key for a Location, stored in the database.

MAXRECORDSILENCE: A time in seconds that the call may have silence before recording is ended. This option is only available on certain hardware types.

MAXRECORDTIME: A time in seconds specifying how long the call may last before recording is automatically ended. This limits the amount of time a recording will continue for a single call. Uses can be to automatically stop recording on a long call, or to conserve disk space in the event a stop message is not received.

PHONEID: User's phone number, extension, device ID.

PRIORITY: A number from 0-100 denoting the priority of the call for recording purposes.

RECORDINGPATH: The system variable value specifying the default path for recordings.

Parameter Definitions

RECORDINGSPEACEINFO: A description of the amount of free disk space on the recording drive. For example: 22.35GB of 37.21GB

RECORDINGTOTALDISKCAPACITY: The size of the disk specified on the recording path

RECORDINGTOTALDISKFREE: The amount of free space on the disk specified on the recording path

RECORDINGTOTALDISKFREEPCT: The percent of free disk space specified on the recording path

REQUESTID: A number identifying a request. This number will be repeated back in the result message as the request ID. This number must be a positive integer value and does not necessarily need to be unique. "2147483647" is the maximum REQUESTID that can be sent to the API. The API will send API_REQUESTID_INVALID as a return error if the value is higher.

SESSIONID: For CHATSTART, CHATUPDATE, and CHATSTOP, this value is provided by the client. For DEVICESTATUS and DEVICELIST, this value is based on the call and device.

STARTTIME: Time that recording started.

STATE: An integer value identifying the line state of a recording channel. Possible values:

- 0 – On Hook
- 1 – Off Hook
- 2 – Recording
- 3 – Playback
- 4 – Waiting
- 5 – Error
- 6 – Resetting
- 7 – Recording Prep
- 8 – Finish Recording
- 9 – Dialing For Playback

STATION: Windows workstation. See also STATIONNAME.

STATIONNAME: This field can simultaneously serve two purposes.

STATIONNAME may be passed as the required item in place of DEVICEID in CALLSTART. If DEVICEID is not passed or is passed as a blank value, Discover will look up the DEVICEID based on the value from the COMPUTERNAME field.

You may also pass the STATIONNAME to override the station mapping that is stored in the recording database for the DEVICEID. This allows you to define your station mappings externally without having to store them in the local Discover system database.

STOPTIME: Time that recording stopped.

SYSTEMPROCESSORSPEED: A measured system processor speed. The reading in MHz

SYSTEMPROCESSORTYPE: The description for the system processor that is stored in the system registry.

SYSTEMRAMTOTAL: Total amount of physical RAM in the system in megabytes.

SYSTEMRAMUSED: Total amount of physical RAM used in megabytes.

SYSTEMRAMFREE: Total amount of free physical RAM in megabytes.

SYSTEMRAMUSEDPCT: Percent of physical RAM used.

SYSTEMUPTIME: Uptime for the system in days, hours, minutes and seconds.

SYS_USER: This value is used to associate a user to an agent. This value should equal the network username (not the Discover username) of the agent. The value is used to associate a network user to an agent defined in the Discover system. This association is used to grant them the proper access rights (such as phone IDs that they may record and download permissions).

TIMEOFFSET: Number of seconds to offset (i.e., increase/decrease) the stop time of the blackout. This value can be a positive or negative integer.

UNIQUEFIELD: This can be any column from the Discover database's Recording table, such as:

agent_id	ani	archive_action_id	audio_hash	audio_size
Calldirection	callid	channel	device_alias	device_id
dnis	duration	filename	filename_video	gate
globalid	Ident	keepdays	locked	listenedto
mediaLabel	overridden	priority	qa_forms	qa_group_id
qa_poss_score	qa_score	recording_time	recording_type	screen_capture
sgroup	user1	user2	user3	user4
user5	user6	user7	user8	user9
user10	user11	user12	user13	user14
user15	video_hash	video_size	wrap_duration	

UNIQUEID: This is a value in the column specified by the UNIQUEFIELD parameter. Together, these parameters identify a recording record in the Recording table.

UPDATE_IF_NOT_RECORDING: When this parameter is present and set to 'Y' the update command will update the last call recorded for the device if the device is not currently being recorded when the update command is called. Possible values (Y/ [N])

USER1-15: Variables that you may use to add your own custom information to be stored with the call record. These values are stored as ASCII text.

Note ()** Updates to these fields using some special characters and symbols may not work correctly. Test all possible characters needed before using this function.

USERNAME: Username in Discover.

Data Type Values

The parameter data types and sizes in the charts below specify how data is stored in the Discover database. The REQUEST and RESPONSE XML messages to and from the API server pass these values as strings. The API converts the necessary items to the appropriate data type when writing values to the database.

Following are the value types for parameters of the CALLSTART, CALLSTOP, CALLUPDATE, RECORDSTART, and RECORDSTOP functions.

REQUESTID	integer (signed 32-bit)
DEVICEID	char(64)
CALLINSTATNCE	TBD
DEVICEALIAS	char(15)
GROUP	char(20)
GATE	char(20)
ANI	char(20)
DNIS	char(20)
USER1-USER3	varchar(20)
USER4-USER8	varchar(255)
USER9-USER15	varchar(50)
CALLID	char(16)
PRIORITY	integer (signed 32-bit)
CALLDIRECTION	char(1) ('I','O','?')
MAXRECORDSILENCE	integer (signed 32-bit)
MAXRECORDTIME	integer (signed 32-bit)
AGENTINITIATED	char(1) ('Y','N')
CTIINITIATED	char(1) ('Y','N')
STATIONNAME	char(50)
UPDATE_IF_NOT_RECORDING	char(1) ('Y','N')
ARCHIVEACTION	bigint(8)
SYS_USER	char(30)
CRM_USER	char(30)
KEEPDAYS	TBD

Following are the value types for the DEVICELIST, DEVICESTATUS, and DEVICERECORDINGSTATUS parameters.

REQUESTID	integer (signed 32-bit)
DEVICEID	char(64)
DEVICEALIAS	char(15)
SYS_USER	char(30)
CALLDISCRIMINATOR	char(64)
CRM_USER	char(30)
GROUP	char(20)
GATE	char(20)
ANI	char(20)
DNIS	char(20)
USER1-USER3	varchar(20)
USER4-USER8	varchar(255)
USER9-USER15	varchar(50)
CALLDIRECTION	char(1) ('I','O','?')
ISTRUNK	Boolean
STATION	char(128)
ISRECORDING	Boolean
FILENAME	char(255)
CALLID	char(30)

Following are the value types for the SYSTEMSTATUS parameters.

REQUESTID	integer (signed 32-bit)
RECORDINGPATH	string
RECORDINGSPACEINFO	string
RECORDINGTOTALDISKCAPACITY	float
RECORDINGTOTALDISKFREE	float
RECORDINGTOTALDISKFREEPCT	float (%2f)
SYSTEMPROCESSORSPEED	string
SYSTEMPROCESSORTYPE	string
SYSTEMRAMTOTAL	integer (signed 64-bit)
SYSTEMRAMFREE	integer (signed 64-bit)
SYSTEMRAMUSEDPCT	integer (unsigned 32-bit)
SYSTEMUPTIME	string

Data Type Values

Following are the value types for the CHANNELS parameters.

REQUESTID	integer (signed 32-bit)
COUNT	Integer (signed 32-bit)
ID	integer (signed 32-bit)
STATE	String
LASTSTATECHANGE	String
LASTSTATECHANGEUNIXTIME	String

Following are the value types for the STATIONS parameters.

REQUESTID	integer (signed 32-bit)
COUNT	integer (signed 32-bit)
STATIONNAME	char(50)
DEVICEID	char(64)

Following are the value types for the FETCHTERMINOLOGY parameters.

REQUESTID	integer (signed 32-bit)
COUNT	integer (signed 32-bit)
NAME	varchar(255)
VALUE	varchar(255)

Following are the value types for the CALLLIST parameters.

REQUESTID	integer (signed 32-bit)
DEVICEID	
CRM_USER	char(30)
SYS_USER	char(30)
DEVICEALIAS	char(15)
GROUP	char(20)
GATE	char(20)
ANI	char(20)
DNIS	char(20)
CALLCOUNT	NA
CALLDATESTART	bigint(8)
CALLDATEEND	bigint(8)
USER1- USER3	varchar(20)
USER4-USER8	varchar(255)
USER9- USER15	varchar(50)

Following are the value types for the CHATSTART, CHATSTOP, and CHATUPDATE parameters.

REQUESTID	integer (signed 32-bit)
SESSIONID	char(255)
AGENTID	integer (signed 32-bit)
KEYNAME	string values USERNAME, EMPLOYEEID
KEYVALUE	char(255)
DEVICEALIAS	char(15)
GROUP	char(20)
GATE	char(20)
ANI	char(20)
DNIS	char(20)
USER1-USER3	varchar(20)
USER4-USER8	varchar(255)
USER9-USER15	varchar(50)
CALLDIRECTION	char(1) ('I','O','?')
CALLID	char(16)

Following are the value types for the IMPORTUSER, IMPORTAGENTPHONE, and IMPORTWORKSTATION parameters.

REQUESTID	integer (signed 32-bit)
ACTION	string values ADD, DELETE, MODIFY
AGENTID	integer (signed 32-bit)
FIRSTNAME	char(20)
LASTNAME	char(30)
SYS_USER	varchar(255)
DOMAIN	char(30)
EMAIL	char(255)
EMPLOYEEID	char(50)
ALLOWSELFRECORD	char(1) ('Y','N')
ALLOWSELFDOWNLOAD	char(1) ('Y','N')
ALLOWDUPLICATE	char(1) ('Y','N')
STATUS	char(1) ('A' - Active, 'I' - Inactive)
SYS_DOMAIN	TBD
SITE_ID	TBD
MOBILE_ID	TBD
PHONEID	char(10)
DEVICEID	char(15)
STATIONNAME	char(50)
LOCATIONID	integer (signed 32-bit)

Data Type Values

Following are the value types for the BLACKOUTSTART and BLACKOUTSTOP parameters.

REQUESTID	integer (signed 32-bit)
DEVICEID	varchar(64)
DEVICEALIAS	varchar(100)
CRM_USER	varchar(50)
SYS_USER	varchar(255)
CALLINSTANCE	TBD

Following are the value types for the ADDGROUP, MODIFYGROUPPERMISSION, and MODIFYUSERGROUPPERMISSION parameters.

REQUESTID	integer (signed 32-bit)
ACTION	string values ADD, MODIFY
GROUPNAME	char(255)
GROUPID	integer (signed 32-bit)
DEVICEID	char(64)
USERNAME	char(16)
PHONEID	char(10)
FIRSTNAME	char(20)
LASTNAME	char(30)
AGENTID	integer (signed 32-bit)

Following are the value types for the EMAIL and COMBINEDEMAIL parameters.

REQUESTID	integer (signed 32-bit)
UNIQUEFIELD	varchar(255)
UNIQUEID	varchar(255)
TOADDRESS	varchar(255)
TONAME	varchar(255)
FROMADDRESS	varchar(255)
FROMNAME	varchar(255)
MEDIA_FORMAT	varchar(3)
IDENT	varchar(255)

Following are the value types for the AGENTWINDOW parameters.

REQUESTID	integer (signed 32-bit)
COMPUTERNAME	varchar(255)
USERNAME	varchar(255)
DOMAIN	varchar(255)
IPADDRESS	varchar(255)
STATUS	varchar(255)
APPLICATIONTITLE	varchar(255)
LASTUPDATE	varchar(255)

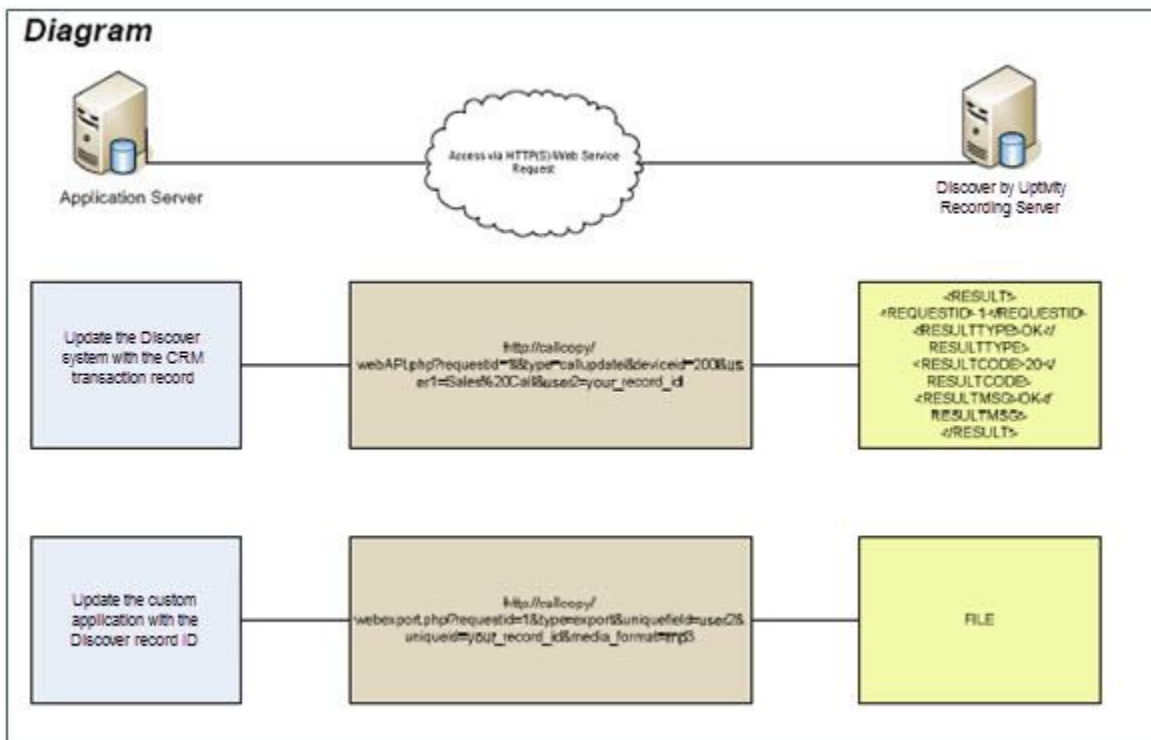
Uptivity WebAPI Service

General Architecture

The Uptivity Web API Service runs on the Discover server via a custom HTTP listener. Proper network firewall, security, and access measures will need to be in place to allow a custom or third-party application to access the server.

The WebAPI service accepts specially formatted URLs that contain API data and translates the URL into an Uptivity API function call which is then executed by the API Server. This allows the same API functionality as the API socket service provider for users more familiar with or applications only capable of making HTTP requests.

An example of the WebAPI service calls are demonstrated in the diagram below.



The WebAPI service is a built-in component on every Discover system. The service has custom configuration options that must be set, and all calls to the service must follow the syntax that is accepted by the WebAPI.

TCP Port Settings

By default, the web service will run on port 2012, or optionally 2013 if SSL is used. The port settings in use by the API module can be modified from the defaults if needed. See the "API Server Settings" section of the *Discover Administration Manual* for more information on API Server configuration settings.

To call the WebAPI properly, you must pass the port number the API Server is listening on in the URL. The port number syntax is highlighted in the examples below

Non SSL-Enabled Connections Example: `http://discoverserveraddress:2012/webAPI.aspx`

SSL-Enabled Connections Example: `https://discoverserveraddress:2013/webAPI.aspx`

WebAPI Call Syntax

To use the WebAPI functions, requests are passed to a specially formatted URL that is accepted by the WebAPI service. An example of a WebAPI request call is below:

```
http://ccserveraddress:2012/webAPI.aspx?type=callupdate&requestid=18213567&deviceid=200&user1=SpecialCall&user2=10121968&keepdays=3650
```

Each request call must be composed of the following components:

- **Protocol Identifier:** This determines whether the call will be sent as plain text or will utilize SSL encryption. For plain text the value will be set to 'HTTP'. For SSL encryption the value will be 'HTTPS'
- **Host Address:** This is the hostname or IP Address of the server running the Uptivity API Service.
- **TCP Port:** This is the port number on which the API Service is listening for web requests.
- **API Page:** Calling this page allows an application to access any functions in the Uptivity API, or allows an application access to download and/or retrieve recorded audio files for any purpose, be it immediate playback or long term storage. Value can be either `/webAPI.php` or `/webAPI.aspx`.
- **Function Type:** This indicates which API function you are passing to the API Service.
- **Function Parameters:** These are the required and optional parameters that need to be supplied for the specified API function. These parameters are defined for each function call type in the function chapters of this manual. All API functions are available via the WebAPI method.

To make a successful WebAPI call, the API function parameters need to be passed to the WebAPI page. The parameters are passed using the *question mark* '?' character, and each parameter is delimited by the *ampersand* '&' character. The desired value for each API parameter is set using an equals '=' sign, followed directly with the desired value for that parameter.

Example WebAPI Calls

Update a Call Record

This example request will update/mark the record with the listed data using the CALLUPDATE function. This function must be passed while the call is being actively recorded. For parameter requirements, see [CALLUPDATE](#).

The WebAPI call should be formatted in the following manner:

```
http://ccserveraddress:2012/webAPI.aspx?type=callupdate&requestid=18213567&deviceid=200&user1=SpecialCall&user2=10121968&keepdays=3650
```

This example URL was constructed from the following components:

- **Protocol:** http
- **Host Address:** ccserveraddress
- **TCP Port:** 2012
- **API Page:** WebAPI.aspx
- **Function Type:** callupdate
- **Parameters:**
 - RequestID: A unique identifier for the transaction generated by the user making the WebAPI call. The value must be an integer.
 - Value: 18213567
 - DeviceID (*required*): The phone extension for the call that is being recorded.
 - Value: 200
 - User1: Custom-defined field (in this example, used to display a text phrase)
 - Value: SpecialCall
 - User2: Custom-defined field (in this example, a transaction ID number)
 - Value: 10121968
 - Keepdays: The number of days this record will be maintained before being purged.
 - Value: 3650

Export a Recorded Audio File

A function type unique to the WebAPI is the **EXPORT** call. This function allows the recorded audio from a call to be exported from the Discover system at any time after the recording has completed.

The Export function supports exporting the audio only in the following formats: CAV (proprietary Uptivity format), WAV (PCM), MP3, VOX and M4A.

The Export function has three required parameters, **UNIQUEFIELD**, **UNIQUEID**, and **MEDIA_FORMAT**. These parameters are used for identifying the desired audio file for exporting.

- **UNIQUEFIELD**: This is the parameter name that contains the identifying information for the record. This can be any parameter inserted from a Call Handling API function, or any parameter returned from a DEVICELIST or DEVICESTATUS API function. The parameter used must contain data that is unique to an individual record. Any parameters that will not contain unique data (*such as deviceid or devicealias*) will return the most recent record that contains matching data. The possible values for UNIQUEFIELD are listed below.
- **UNIQUEID**: This is the value that will be contained in the 'uniquefield' parameter that uniquely identifies the record.
- **MEDIA_FORMAT**: File format of the exported audio file.

Optional parameters **ENCRYPT** and **PASSWORD** may be used to encrypt an exported CAV file.

- **ENCRYPT**: Used to encrypt the exported CAV file, requires PASSWORD.
- **PASSWORD**: Password used to access the encrypted exported CAV.

The WebAPI call should be formatted in the following manner:

```
http://ccserveraddress:2012/webAPI.aspx?type=export&requestid=10482345&uniquefield=user2&uniqueid=10121968&media_format=mp3&encrypt=Y&password=test
```

This example URL was constructed from the following components:

- **Protocol**: http
- **Host Address**: ccserveraddress
- **TCP Port**: 2012
- **API Page**: WebAPI.aspx
- **Function Type**: export
- **Parameters**:
 - **REQUESTID**: A unique identifier for the transaction generated by the user making the WebAPI call. The value must be an integer.
 - Value: 10482345
 - **UNIQUEFIELD**: required parameter name that contains the identifying information for the record. (*in this example, a user generated transaction ID*)
 - Value: user2
 - **UNIQUEID**: The value that will be contained in the 'uniquefield' parameter for the desired record.
 - Value: 10121968
 - **MEDIA_FORMAT**: This is the file format of the exported audio file.
 - Value: mp3

Errors: Possible error returns are:

- **API_FILE_NOT_FOUND:** Appears if the specific file to be exported and emailed cannot be found.
- **API_INVALID_MESSAGE_FORMAT:** Appears if parameters are missing or the request is not formatted correctly.

Export Multiple Recorded Audio Files

The COMBINEEXPORT function type combines multiple audio files into one file and exports it. It only uses these values:

- **IDENT:** These are comma-separated call record IDs.

The COMBINEEXPORT call should be formatted in the following manner:

```
http://ccserveraddress:2012/webAPI.aspx?type=combinedexport&requestid=10482345&ident=10121967,10121968,10121969&media_format=mp3
```

Errors: Possible error returns are:

- **API_FILE_NOT_FOUND:** Appears if the specific file to be exported and emailed cannot be found.
- **API_INVALID_MESSAGE_FORMAT:** Appears if parameters are missing or the request is not formatted correctly.

Export Multiple Recorded Audio Files as a ZIP File

The MULTIEXPORT function type combines multiple audio files into a ZIP file and exports that file. It only uses these values:

- **IDENT:** These are comma-separated call record IDs.

The MULTIEXPORT call should be formatted in the following manner:

```
http://ccserveraddress:2012/webAPI.aspx?type=multiexport&requestid=10482345&ident=10121967,10121968,10121969&media_format=mp3
```

Errors: Possible error returns are:

- **API_FILE_NOT_FOUND:** Appears if the specific file to be exported and emailed cannot be found.
- **API_INVALID_MESSAGE_FORMAT:** Appears if parameters are missing or the request is not formatted correctly.

Event Interface

Discover can also broadcast events about known devices. Other applications can subscribe to those events to watch for state changes.

The Event Proxy is a standard blocking TCP server listening on port 5620. Usage is as simple as connecting to the port and sending a well-formatted XML request. See the "API Server Settings" section of the *Discover Administration Manual* for more information on API Server configuration settings.

Messages that are sent should end with a carriage return / line feed character (\r\n or ASCII character #1310 [Hex \$DA]) to signal the end of data transmission.

Request Command

This is the command that any client application connecting directly to our API will send to initiate event monitoring. The internal Uptivity API passes these events to the Event Proxy.

```
<REQUEST>
  <REQUESTID>0</REQUESTID>
  <TYPE>EVENTS</TYPE>
  <EVENTCLASS>ALL</EVENTCLASS>
  <EVENTVALUE></EVENTVALUE>
</REQUEST>
```

Request Result Schema

```
<RESULT>
  <REQUESTTYPE>EVENTS</REQUESTTYPE>
  <REQUESTID>0</REQUESTID>
  <RESULTTYPE>API_OK</RESULTTYPE>
  <RESULTCODE>20</RESULTCODE>
  <RESULTMSG>API_OK</RESULTMSG>
  <EVENTXREF>0</EVENTXREF>
  <EVENTCLASS>ALL</EVENTCLASS>
  <EVENTTYPE></EVENTTYPE>
</RESULT>
```

CALLSTART Event

The CALLSTART event signals that Discover has received a call start notification from a CTI or API source.

```

<CALLCOPYEVENT>
<EVENTCLASS>CALL</EVENTCLASS>
<EVENTTYPE>CALLSTART</EVENTTYPE>
<MODULE>Api</MODULE>
<EVENTXREF>0</EVENTXREF>
<EVENTDATA>
  <GLOBALCALLID></GLOBALCALLID>
  <DEVICEID>1111</DEVICEID>
  <DEVICEALIAS></DEVICEALIAS>
  <SYS_USER></SYS_USER>
  <CRM_USER></CRM_USER>
  <GATE></GATE>
  <ANI></ANI>
  <DNIS></DNIS>
  <AGENTID>16</AGENTID>
  <USER1></USER1>
  <USER2></USER2>
  <USER3></USER3>
  <USER4></USER4>
  <USER5></USER5>
  <USER6></USER6>
  <USER7></USER7>
  <USER8></USER8>
  <USER9></USER9>
  <USER10></USER10>
  <USER11></USER11>
  <USER12></USER12>
  <USER13></USER13>
  <USER14></USER14>
  <USER15></USER15>
  <GROUP></GROUP>
  <CALLINSTANCE></CALLINSTANCE>
  <CALLDIRECTION>I</CALLDIRECTION>
  <STATION></STATION>
  <ISTRUNK></ISTRUNK>
  <KEEPDAYS>30</KEEPDAYS>
  <ARCHIVEACTION>-1</ARCHIVEACTION>
  <STARTTIME>1/31/2011 2:39:49 PM</STARTTIME>
  <COREIDENT>1</COREIDENT>
</EVENTDATA>
</CALLCOPYEVENT>

```

CALLSTOP Event

The CALLSTOP event signals that Discover has received a call stop or call end notification from a CTI or API source.

```

<CALLCOPYEVENT>
<EVENTCLASS>CALL</EVENTCLASS>
<EVENTTYPE>CALLSTOP</EVENTTYPE>
<MODULE>Api</MODULE>
<EVENTXREF>0</EVENTXREF>
<EVENTDATA>
  <DEVICEALIAS></DEVICEALIAS>
  <SYS_USER></SYS_USER>
  <CRM_USER></CRM_USER>
  <GATE></GATE>
  <ANI></ANI>
  <DNIS></DNIS>
  <AGENTID>16</AGENTID>
  <USER1></USER1>
  <USER2></USER2>
  <USER3></USER3>
  <USER4></USER4>
  <USER5></USER5>
  <USER6></USER6>
  <USER7></USER7>
  <USER8></USER8>
  <USER9></USER9>
  <USER10></USER10>
  <CALLINSTANCE></CALLINSTANCE>
  <USER11></USER11>
  <USER12></USER12>
  <USER13></USER13>
  <USER14></USER14>
  <USER15></USER15>
  <GROUP></GROUP>
  <KEEPDAYS>-1</KEEPDAYS>
  <ARCHIVEACTION>-1</ARCHIVEACTION>
  <GLOBALCALLID></GLOBALCALLID>
  <DEVICEID>1111</DEVICEID>
  <COREIDENT>1</COREIDENT>
</EVENTDATA>
</CALLCOPYEVENT>

```

RECORDINGSTARTED Event

The RECORDINGSTARTED event signals that Discover is recording a call.

```

<CALLCOPYEVENT>
<EVENTCLASS>RECORD</EVENTCLASS>
<EVENTTYPE>RECORDINGSTARTED</EVENTTYPE>
<MODULE>Api</MODULE>
<EVENTXREF>0</EVENTXREF>
<EVENTDATA>
  <DEVICEID>1111</DEVICEID>
  <FILENAME>C:\Recordings\20110131\1111\1111-14-39-50.au</FILENAME>
  <CHANNEL>1</CHANNEL>
  <ERRORREASON>NONE</ERRORREASON>
  <GLOBALCALLID></GLOBALCALLID>
  <DEVICEALIAS></DEVICEALIAS>
  <GATE></GATE>
  <ANI></ANI>
  <DNIS></DNIS>
  <AGENTID>16</AGENTID>
  <USER1></USER1>
  <USER2></USER2>
  <USER3></USER3>
  <USER4></USER4>
  <USER5></USER5>
  <USER6></USER6>
  <USER7></USER7>
  <USER8></USER8>
  <USER9></USER9>
  <USER10></USER10>
  <USER11></USER11>
  <USER12></USER12>
  <USER13></USER13>
  <CALLINSTANCE></CALLINSTANCE>
  <USER14></USER14>
  <USER15></USER15>
  <GROUP></GROUP>
  <KEEPDAYS>30</KEEPDAYS>
  <ARCHIVEACTION>-1</ARCHIVEACTION>
  <COREIDENT>1</COREIDENT>
</EVENTDATA>
</CALLCOPYEVENT>

```


RECORDINGSTOPPED Event

The RECORDINGSTOPPED event signals that Discover has stopped recording a call

```
<CALLCOPYEVENT>
<EVENTCLASS>RECORD</EVENTCLASS>
<EVENTTYPE>RECORDINGSTOPPED</EVENTTYPE>
<MODULE></MODULE>
<EVENTXREF>0</EVENTXREF>
<EVENTDATA>
<GLOBALCALLID>000100000000092</GLOBALCALLID>
<DEVICEID>1111</DEVICEID>
<DEVICEALIAS></DEVICEALIAS>
<GATE></GATE>
<ANI></ANI>
<DNIS></DNIS>
<AGENTID>16</AGENTID>
<USER1></USER1>
<USER2></USER2>
<USER3></USER3>
<USER4></USER4>
<USER5></USER5>
<KEEPDAYS>30</KEEPDAYS>
<RECORDID>13101</RECORDID>
<COREIDENT>1</COREIDENT>
</EVENTDATA>
</CALLCOPYEVENT>
```

RECORDINGUPDATE Event

The RECORDINGUPDATE event signals that Discover has saved a recording to the database.

```
<CALLCOPYEVENT>
<EVENTCLASS>RECORD</EVENTCLASS>
<EVENTTYPE>RECORDINGUPDATE</EVENTTYPE>
<MODULE></MODULE>
<EVENTXREF>0</EVENTXREF>
<EVENTDATA>
  <GLOBALCALLID>000100000000092</GLOBALCALLID>
  <DEVICEID>1111</DEVICEID>
  <KEEPDAYS>30</KEEPDAYS>
  <FILENAME>C:\Recordings\20110131\1111\1111-14-39-50.au</FILENAME>
  <RECORDID>13101</RECORDID>
  <COREIDENT>1</COREIDENT>
</EVENTDATA>
</CALLCOPYEVENT>
```

RECORDINGPAUSED Event

The RECORDINGPAUSED event signals that Discover has paused recording a call.

```
<CALLCOPYEVENT>
<EVENTCLASS>RECORD</EVENTCLASS>
<EVENTTYPE> RECORDINGPAUSED</EVENTTYPE>
<MODULE>Api</MODULE>
<EVENTXREF>0</EVENTXREF>
<EVENTDATA>
<DEVICEID>1111</DEVICEID>
<FILENAME>C:\Recordings\20110131\1111\1111-14-39-50.au</FILENAME>
<CHANNEL>1</CHANNEL>
<ERRORREASON>NONE</ERRORREASON>
<GLOBALCALLID></GLOBALCALLID>
<DEVICEALIAS></DEVICEALIAS>
<GATE></GATE>
<ANI></ANI>
<DNIS></DNIS>
<AGENTID>16</AGENTID>
<USER1></USER1>
<USER2></USER2>
<USER3></USER3>
<USER4></USER4>
<USER5></USER5>
<USER6></USER6>
<USER7></USER7>
<USER8></USER8>
<USER9></USER9>
<USER10></USER10>
<USER11></USER11>
<USER12></USER12>
<USER13></USER13>
<CALLINSTANCE></CALLINSTANCE>
<USER14></USER14>
<USER15></USER15>
<GROUP></GROUP>
<KEEPDAYS>30</KEEPDAYS>
<ARCHIVEACTION>-1</ARCHIVEACTION>
<COREIDENT>1</COREIDENT>
</EVENTDATA>
</CALLCOPYEVENT>
```

RECORDINGRESUMED Event

The RECORDINGRESUMED event signals that Discover has resumed recording a call from pause.

```
<CALLCOPYEVENT>
<EVENTCLASS>RECORD</EVENTCLASS>
<EVENTTYPE> RECORDINGRESUMED</EVENTTYPE>
<MODULE>Api</MODULE>
<EVENTXREF>0</EVENTXREF>
<EVENTDATA>
<DEVICEID>1111</DEVICEID>
<FILENAME>C:\Recordings\20110131\1111\1111-14-39-50.au</FILENAME>
<CHANNEL>1</CHANNEL>
<ERRORREASON>NONE</ERRORREASON>
<GLOBALCALLID></GLOBALCALLID>
<DEVICEALIAS></DEVICEALIAS>
<GATE></GATE>
<ANI></ANI>
<DNIS></DNIS>
<AGENTID>16</AGENTID>
<USER1></USER1>
<USER2></USER2>
<USER3></USER3>
<USER4></USER4>
<USER5></USER5>
<USER6></USER6>
<USER7></USER7>
<USER8></USER8>
<USER9></USER9>
<USER10></USER10>
<USER11></USER11>
<USER12></USER12>
<USER13></USER13>
<CALLINSTANCE></CALLINSTANCE>
<USER14></USER14>
<USER15></USER15>
<GROUP></GROUP>
<KEEPDAYS>30</KEEPDAYS>
<ARCHIVEACTION>-1</ARCHIVEACTION>
<COREIDENT>1</COREIDENT>
</EVENTDATA>
</CALLCOPYEVENT>
```

About Uptivity

What boosts the bottom line for any company with a contact center? How about getting the best that every agent can deliver from their first day on the job and constantly optimizing contact center management and performance? Only Uptivity gives you the tools you need to continuously improve every aspect of each step of every agent's life cycle and enhance customer satisfaction. You get exactly what you need thanks to a modern, integrated, and easy-to-use suite of tools that offers a unified system for performance management, workforce management, speech analytics, and call recording. Unparalleled customer service and support from our in-house staff combine with a better bundle for a better value, and a lower total cost of ownership.

Headquartered in Columbus, Ohio, and on the Web at www.uptivity.com.